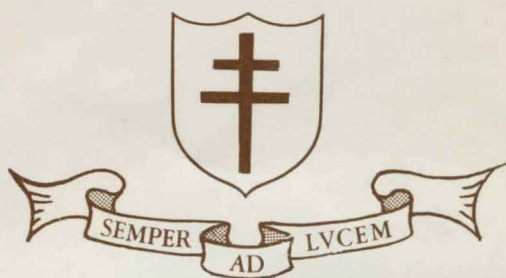


St. Bride's School

FOR YOUNG LADIES.



PROSPECTUS



Miss Brighe Dachcolwyn
Headmistress

Introduction

ST. BRIDE'S is a small private boarding school for girls between the ages of thirteen and eighteen, set in some two acres of ground on the edge of the little fishing village of Burtonport, in the heart of the Rosses on the west coast of Ireland.

The area is one of outstanding natural beauty containing over a hundred lakes. The house itself commands views of the Atlantic, with islands and inlets, on three sides, while to the east the rugged countryside sweeps away to the distant Derryveagh Mountains. The girls receive the healthy benefit of lively sea air and fresh open countryside, and in the matter of sunshine, so vital to the health of growing children, we are singularly well favoured.

The school is run along the lines traditional to girls' boarding schools. Our aim is not only to train the academic abilities of our pupils, but to develop character, poise and personality; in short, to produce educated young ladies in every sense of those words.

It is not least for this reason that we are pleased this year to offer short courses of a week and upwards. While the academic progress made during such a short stay must necessarily be limited (though certainly by no means negligible), we believe that girls may derive considerable benefit in character, poise, health and happiness from these short courses.



THE HOUSE

The imposing Victorian building which now houses St. Bride's was originally built as an hotel. It served in that capacity for some years, and later as a private Rest Home. In April of this year it was officially re-opened by the Mayor of the Rosses, Mr. James Gallagher as St. Bride's School for Young Ladies.

CURRICULUM

St. Bride's offers a standard classical curriculum, the cardinal subjects being Mathematics, Elementary Latin, Grammar and Literature, the latter with a strong emphasis on early English texts. To these may be added other subjects such as Calligraphy (or handwriting for

younger girls), History, Geography, Music and Geometric Design. 'Scientific' subjects, other than Botany are not normally taught, although we do have staff qualified to teach them, and they can sometimes be studied by special arrangement. We are well accustomed to helping girls who have difficulty with particular subjects, and no child need have anything to worry about, provided that she is prepared to work hard and give of her best.

THE SCHOOL DAY

The day at St. Bride's begins with the rising bell at half-past seven. Instant rising is not obligatory, as long as girls are ready for breakfast at eight-fifteen.



The morning's lessons begin at nine o'clock and continue until midday, with a mid-morning break. Lunch is at five minutes after noon and the afternoon's lessons begin at half-past one, continuing until three. The remainder of the afternoon is usually free for the children to enjoy themselves, only providing that they do any preparation and other work which may have been given to them. The amount of unsupervised recreation allowed depends upon the age and behaviour of the children concerned, but a great deal of freedom is granted in after-school hours to all girls who can be trusted not to abuse it.

The time of High Tea may vary according to the



time of year and the weather, but there is always some time between supper and bedtime at nine-thirty; it is at this hour that the younger children often like to have a story read to them.

In fine weather the girls are not always confined to the classroom during lesson time. Nature walks and other outdoor activities form a part of the curriculum.

AFTER SCHOOL

The scope for out-of-school activities is very wide. The countryside surrounding the school contains cliffs and spinneys, bays and beautiful beaches, both sandy and rocky, charming country lanes, and a very great expanse of open countryside, all within General



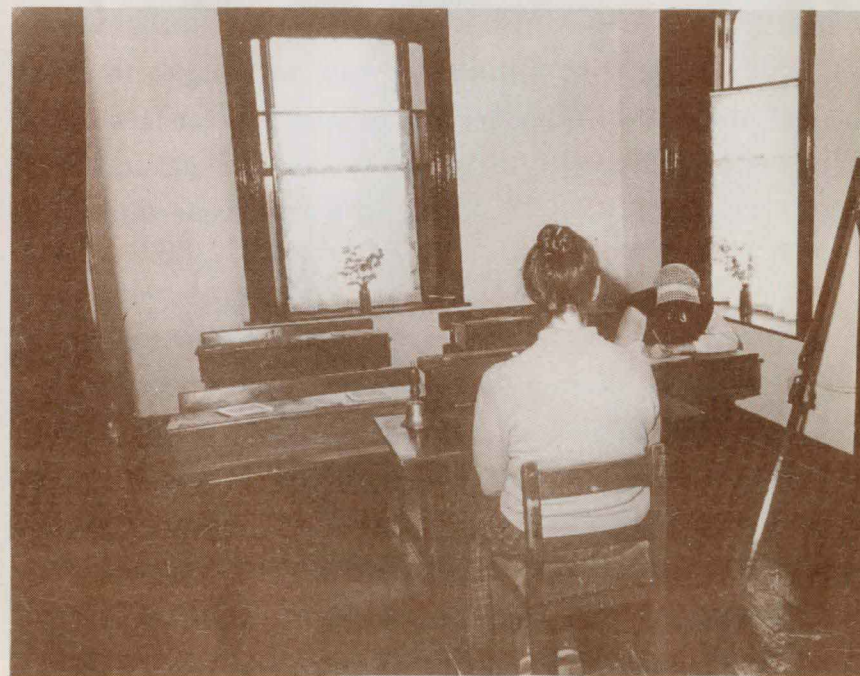
Bounds (that is, open to girls upon receiving permission to leave the school's Immediate Bounds. Such permission is usually freely granted to responsible girls). The area contains a profusion of wild flowers, many now rare in England. The scenes depicted on pages seven and ten of this Prospectus both lie within a few minutes walk of St. Bride's.

For indoor activities, a Common Room is provided, with suitable games and books. In colder weather, tea may be made with a copper kettle over the open fire. The School has a modern gramophone which may sometimes be used by an unsupervised group of girls, provided that great care is taken to avoid overwinding.

With the usual indoor and outdoor games together with the many ideas which girls have among themselves — play readings, societies, expeditions and explorations etc.— leisure time is usually found only too short for the many things to be fitted into it. However, should any girls give the appearance of being bored or listless (as opposed to engaging in genuine relaxation or conversation), they will be quickly organised by a mistress into some definite activity.

THE TEA SHOP

The school teashop is a great favourite with the girls. Tea and cakes may be taken here in the afternoon as well as treats such as Ginger Beer, Sarsaparilla and





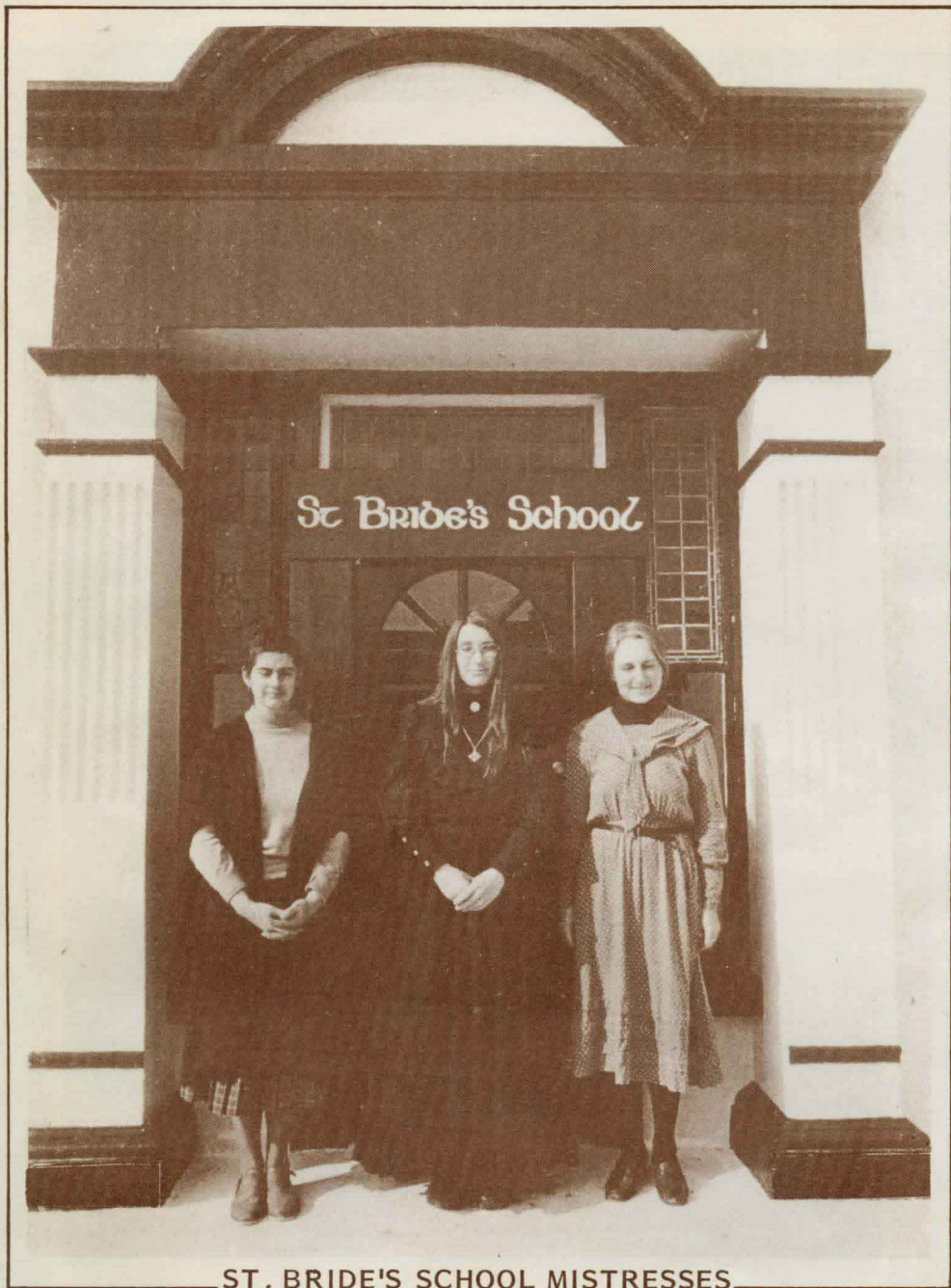
Milk Soda. Sweets and sundries may be bought to take away. More substantial teas may also be ordered, if permission is obtained to miss the regular school tea. Picnic hampers may also be ordered with permission.

INDIVIDUAL ATTENTION

St. Bride's is a small school with small classes. This permits a high degree of individual attention to be given to each girl. While helping her to become a part of the whole, to develop the team spirit, the school tries to be sensitive to the individual needs of each child in its care. Different temperaments require different treatment and we are happy to discuss in advance the special needs of your child.



Childhood Thoughts



ST. BRIDE'S SCHOOL MISTRESSES

Left to right:

Miss Helen Baird, Miss Brighe Dachcolwyn, Miss Sheila Stead.

St. Bride's School, Burtonport, County Donegal, Ireland.