

# A Novel *BHLHE41* Variant is Associated with Short Sleep and Resistance to Sleep Deprivation in Humans

Renata Pellegrino, PhD<sup>1,2,3,\*</sup>; Ibrahim Halil Kavakli, PhD<sup>4,\*</sup>; Namni Goel, PhD<sup>2,5</sup>; Christopher J. Cardinale, MD, PhD<sup>1</sup>; David F. Dinges, PhD<sup>2,5</sup>; Samuel T. Kuna, MD<sup>2,6,7</sup>; Greg Maislin, MS, MA<sup>2,6</sup>; Hans P.A. Van Dongen, PhD<sup>8</sup>; Sergio Tufik, MD, PhD<sup>9</sup>; John B. Hogenesch, PhD<sup>8</sup>; Hakon Hakonarson, MD, PhD<sup>1</sup>; Allan I. Pack, MBChB, PhD<sup>2,6</sup>

<sup>1</sup>Center for Applied Genomics, The Children's Hospital of Philadelphia, Philadelphia, PA; <sup>2</sup>Center for Sleep and Circadian Neurobiology, University of Pennsylvania Perelman School of Medicine, Philadelphia, PA; <sup>3</sup>Departamento de Psicobiologia, Universidade Federal de São Paulo, UNIFESP, São Paulo, Brazil; <sup>4</sup>Departments of Chemical and Biological Eng. and Molecular Biology and Genetics, Koc University, Rumelifeneri Yolu, Sariyer-Istanbul, Turkey; <sup>5</sup>Division of Sleep and Chronobiology, Department of Psychiatry, and <sup>6</sup>Division of Sleep Medicine, University of Pennsylvania Perelman School of Medicine, Philadelphia, PA; <sup>7</sup>Department of Medicine, Philadelphia Veterans Affairs Medical Center, Philadelphia, PA; <sup>8</sup>Sleep and Performance Research Center, Washington State University, Pullman, WA; <sup>9</sup>Department of Pharmacology, Institute for Translational Medicine and Therapeutics, University of Pennsylvania Perelman School of Medicine, Philadelphia, PA; \*co-first authors

**Study Objectives:** Earlier work described a mutation in *DEC2* also known as *BHLHE41* (basic helix-loop-helix family member e41) as causal in a family of short sleepers, who needed just 6 h sleep per night. We evaluated whether there were other variants of this gene in two well-phenotyped cohorts.

**Design:** Sequencing of the *BHLHE41* gene, electroencephalographic data, and delta power analysis and functional studies using cell-based luciferase.

**Results:** We identified new variants of the *BHLHE41* gene in two cohorts who had either acute sleep deprivation (n = 200) or chronic partial sleep deprivation (n = 217). One variant, Y362H, at another location in the same exon occurred in one twin in a dizygotic twin pair and was associated with reduced sleep duration, less recovery sleep following sleep deprivation, and fewer performance lapses during sleep deprivation than the homozygous twin. Both twins had almost identical amounts of non rapid eye movement (NREM) sleep. This variant reduced the ability of *BHLHE41* to suppress CLOCK/BMAL1 and NPAS2/BMAL1 transactivation *in vitro*. Another variant in the same exome had no effect on sleep or response to sleep deprivation and no effect on CLOCK/BMAL1 transactivation. Random mutagenesis identified a number of other variants of *BHLHE41* that affect its function.

**Conclusions:** There are a number of mutations of *BHLHE41*. Mutations reduce total sleep while maintaining NREM sleep and provide resistance to the effects of sleep loss. Mutations that affect sleep also modify the normal inhibition of *BHLHE41* of CLOCK/BMAL1 transactivation. Thus, clock mechanisms are likely involved in setting sleep length and the magnitude of sleep homeostasis.

**Keywords:** *BHLHE41*, delta power, genetics, sleep, sleep deprivation, sleep loss

**Citation:** Pellegrino R, Kavakli IH, Goel N, Cardinale CJ, Dinges DF, Kuna ST, Maislin G, Van Dongen HP, Tufik S, Hogenesch JB, Hakonarson H, Pack AI. A novel *BHLHE41* variant is associated with short sleep and resistance to sleep deprivation in humans. *SLEEP* 2014;37(8):1327-1336.

## INTRODUCTION

Sleep is an essential physiological state of reduced activity and alertness in all mammals and several other animal species. In mammals, sleep is identified by characteristic electroencephalogram (EEG) patterns and can be divided into non rapid eye movement (NREM) sleep and rapid eye movement (REM) sleep.<sup>1</sup> Loss of sleep, i.e., sleep deprivation, results in performance impairments including performance lapses as determined by the psychomotor vigilance reaction time test (PVT).<sup>2-5</sup> This is a biological trait, i.e., there are individuals who are resistant to or very sensitive to the effects of sleep loss as assessed by increases in performance lapses.<sup>4</sup> We have recently shown, using a classic twin study, that this is a highly heritable trait.<sup>6</sup>

Classically, sleep is proposed to be regulated by the interaction between two independent processes: the drive for sleep or sleep homeostasis (process S) and the circadian clock

(process C).<sup>7-12</sup> In the past, these processes have been considered distinct. Recent data, however, challenge this concept.<sup>13</sup> Expression of clock genes such as *PER2* (PERIOD 2) in the cerebral cortex is increased with sleep deprivation, i.e., their expression is affected by sleep loss in addition to circadian rhythms.<sup>14</sup> Moreover, recent studies in mutant mice have demonstrated that circadian clock genes such as *NPAS2* (neuronal PAS domain protein 2; MIM:603347), *ARNTL*, also known as *BMAL1* (aryl hydrocarbon receptor nuclear translocator-like; MIM:602550), and *CRY1/CRY2* (cryptochrome 1 [photolyase-like] and 2; MIM:601933; MIM:603732) can affect not only the timing of sleep, but also sleep homeostasis and sleep architecture.<sup>13,15-20</sup>

Perhaps the most convincing evidence of the role of clock genes in determining sleep duration and the amount of sleep recovery following deprivation (sleep homeostasis) is the demonstration that individuals with a mutation in exon 5 of *BHLHE41* (class E basic helix-loop-helix protein 41), also known as *DEC2*, have short sleep duration.<sup>21</sup> This mutation is at the amino acid position 384, with a missense mutation, where a proline is replaced by an arginine (c.1151C > G, p.Pro384Arg; MIM:612975). Knocking in this mutation of *BHLHE41* into *Drosophila* or mice results in shorter sleep and less recovery sleep following sleep deprivation.<sup>21</sup>

*BHLHE41* is part of the transcription factor family that is regulated by the mammalian molecular clock.<sup>21-24</sup> *BHLHE41*

Submitted for publication November, 2013

Submitted in final revised form January, 2014

Accepted for publication February, 2014

Address correspondence to: Renata Pellegrino, PhD, Center for Applied Genomics, The Children's Hospital of Philadelphia, 3615 Civic Center Boulevard, Abramson Research Center, Suite 1014, Philadelphia, PA 19104-4318; E-mail: renata.pellegrino@gmail.com

influences other molecules such as BMAL/CLOCK. The CLOCK and BMAL1 proteins form a heterodimer and through E-box elements in promoter regions activate the transcription of *PERIOD* genes. Honma et al.<sup>23</sup> demonstrated the capacity of the transcriptional repressors *BHLHE40 (DEC1)* and *BHLHE41 (DEC2)* to inhibit Clock/Bmal1-induced transactivation of the mouse *Per1* gene promoter. The inhibition was either through direct protein–protein interactions with BMAL1 and/or competition for E-box elements. The p.Pro384Arg mutation found by He et al.<sup>21</sup> resulted in the inability of the BHLHE41 protein to interact properly with the circadian clock transcription factors CLOCK and BMAL1. The p.Pro384Arg BHLHE41 variant was deficient in its ability to repress CLOCK and BMAL1.

Based on this result, we questioned whether there might be other variants of *BHLHE41* in human populations that affect sleep duration and response to sleep deprivation. We found that there are other variants of *BHLHE41* in the human population. The effect of these variants on sleep duration in humans is associated with their effect on suppression of CLOCK/BMAL activation. Mutations that alter the suppression of CLOCK/BMAL activation are associated with short sleep and resistance to the effects of sleep deprivation, whereas a mutation that does not affect suppression has no effect on sleep. This has relevance not only for understanding the genetic basis of short sleep in humans, but also adds support for this molecular mechanism setting the duration of sleep that individuals need.

## METHODS

### Subjects and Phenotypes

#### Ethics Statement

For all subjects, consent was obtained prior to entry and had the approval of the University of Pennsylvania institutional review board; all subjects received compensation for participation.

#### Twin Cohort: Total Sleep Deprivation

The twin cohort was collected at the University of Pennsylvania and a consent form approved by the institution was signed. The cohort was studied to assess the heritability of the response to sleep deprivation.<sup>6</sup> A total of 59 pairs of monozygotic (MZ) twins (mean age  $\pm$  standard deviation [SD] 29.2  $\pm$  6.8 y; 15 male and 44 female pairs) and 41 same-sex dizygotic (DZ) twins (mean age  $\pm$  SD 26.6  $\pm$  7.6 y; 15 male and 26 female pairs) were initially assessed for zygosity by a questionnaire. The details of subject recruitment and assessment as well as the protocol used are described in Kuna et al.<sup>6</sup> In brief, subjects were healthy with no chronic conditions such as psychiatric disorder, neurological problems including migraines, or medication use. A greater percentage of the DZ twin pairs reported being African American ( $n = 15$  pairs; 36.6%) compared with MZ twin pairs ( $n = 7$ ; 11.9%). There were three Asian MZ pairs and no Asian DZ pairs. There was one MZ pair who self-identified as having more than one race. There were 48 Caucasian MZ pairs (81.5%) and 26 Caucasian DZ pairs (63.4%). The subjects underwent a medical history and physical examination, which also included a battery of standardized questionnaires including the Epworth Sleepiness Scale (ESS)<sup>43</sup> and Pittsburgh Sleep Quality Index (PSQI).<sup>44</sup> Illicit drug use was excluded by a

urine drug screen and sleep apnea excluded by an in-laboratory sleep study (1 night of EEG recording of sleep with respiratory variables). Subjects had assessment of sleep duration at home by actigraphy and twice daily sleep diary. They had 2 nights of in-laboratory sleep studies with EEG recording of sleep followed by 38 h of sleep deprivation and then recovery sleep with assessment of the EEG. During the deprivation period, subjects performed a 10-min psychomotor vigilance reaction time test (PVT)<sup>6</sup> every 2 h (19 times). A sensitive measure of effect of sleep loss is the number of performance lapses, i.e., responses with reaction times  $> 500$  msec. The number during each trial was recorded. For EEG recording, four leads were placed according to the International 10/20 system including C3A2 and C4A1 electrodes. We used the C3A2 derivation to score sleep stages and wakefulness in 20-sec epochs using our Sandman system (Mallinckrodt, Elite Sleep System Version 6.1). Scoring was based on the rules of Rechtschaffen and Kales.<sup>45</sup> The EEG during sleep was sampled at 128 Hz. Power spectra during each episode of NREM sleep (N2 and N3) were estimated using a fast Fourier transform routine with 4-sec epochs, linear detrending, and Hanning window.<sup>46</sup> This results in a frequency resolution of 0.25 Hz. We assessed delta power (0.75 Hz to 4.5 Hz). The study was approved by the institutional review boards at the University of Pennsylvania. Written informed consent was obtained from each participant. All testing was performed at the University of Pennsylvania.

#### Nonrelated Cohort (Partial Chronic Sleep Deprivation)

The second cohort was subjects involved in a study of the effects of chronic partial sleep deprivation (PSD) at the Sleep and Chronobiology Laboratory at the Hospital of the University of Pennsylvania. The subject recruitment for this study and protocol details have been described previously.<sup>27</sup> The habitual sleep duration for these subjects ranged between 6.5–8.5 h daily with regular bedtimes and wake up times between 06:00–09:00 (verified by sleep logs and wrist actigraphy for at least 1 w before study entry). For the first 2 nights of the study (baseline), subjects received 10 h time in bed from 22:00–08:00 to reduce any preexisting sleep debt; for the subsequent 5 nights, subjects received 4 h time in bed per night (04:00–08:00) for sleep. The subjects underwent a number of neurobehavioral assessments including the PVT (see previous text).

#### Identification of *BHLHE41* Variants

The blood sample collection and DNA preparation were performed using Qiagen DNAeasy mini kit (Qiagen, CA) and the FX (Beckman Coulter – Indianapolis, IN) Agencourt automation following the manufactures recommendations. We designed five set of primers covering the five exons of *BHLHE41* gene originally for the first screening. Sanger sequencing was performed at Center for Applied Genomics and the runs were performed at the Core Facility of University of Pennsylvania according to their procedures and standard protocol. Primers are available upon request.

#### Cell Culture, Transfections, and Luciferase Assay and Western Blot Analysis

HEK 293T and Neuro2A cells were used for all transfections and maintained in Dulbecco modified medium (DMEM, Gibco,

**Table 1**—Characteristics of *BHLHE41* human variant carriers and phenotypes

Characteristic	Total sleep deprivation: twin samples		Partial sleep deprivation: unrelated subjects		
	Variant carrier	No variant carrier	Variant carrier 1 SR008	Variant carrier 2 SR040	Variant carrier 3 XU58
Variant description	c.1086C > T (p.Tyr362His)	—	c.1151C > A (p.Pro384Gln)	c.1151C > A (p.Pro384Gln)	c.1151C > A (p.Pro384Gln)
Age	27	27	35	23	23
BMI (kg/m <sup>2</sup> )	23.9	25.3	21.9	21.1	20.8
Sex (M/F)	M	M	M	M	F
Ethnicity	AA	AA	AA	AA	Multiracial
PSQI Score*	6	3	2	3	1
ESS Score**	6	4	3	11	7
Mean Total Sleep Time (min)***	299.3	364.7	391.8	439.8	483
Mean PVT Lapses (acute total sleep deprivation)	6.8	11.5	N/A	N/A	N/A
Mean baseline PVT lapses: mean lapses across 5 nights of 4 hours of sleep	NA	NA	1.5; 2.8	1.1; 2.7	9.3; 17.4

AA, African American; N/A, not applicable. \* Pittsburgh Sleep Quality Index (PSQI): a self-report score capturing chronic sleep duration and insomnia symptoms. A score of < 5 is considered normal.<sup>44</sup> \*\* Epworth Sleepiness Score (ESS): this is a self-report score about tendency to fall asleep in inappropriate circumstances (sleepiness). The range of the score is 0-24; excessive sleepiness is considered ≥ 10.<sup>43</sup> \*\*\* Sleep duration measured by actigraphy 7-8 days prior to study entry.

Life Technologies, CA, USA) with 10% fetal bovine serum (FBS, Gibco, L-glu and Pen/Strep). Cells were transiently transfected with expression vectors for *CLOCK*, *NPAS2*, *BMALI*, wild-type *BHLHE41*, and *BHLHE41* variants (p.Tyr362His, p.Pro384Arg, p.Pro384Gln, and p.Ala380Ser) by reverse transfection in 96-well plates. Then transfection reactions were conducted in each well with  $8 \times 10^5$  cells in DMEM containing 20% FBS. Approximately 18 h after transfection, the luciferase assays were performed according to the manufacturer's instructions (Promega, CA, USA). Transfection efficiencies were normalized by cotransfecting 5 ng of the HSV-TK generating Renilla luciferase activity. All transfections were repeated at least three times.

Total protein was extracted from the HEK 293T transiently transfected with expression plasmids of *BMALI*, *CLOCK*, wild-type, or *BHLHE41* variants. Cells were lysed with RIPA buffer (20 mM Tris-HCl (pH 7.5) 150 mM NaCl, 1 mM EDTA, 1% NP-40, and a protease inhibitor tablet from Roche, Indianapolis, USA). After the clarification by centrifuge 21,000 g, a total of 30 µg of protein was separated by 7.5% sodium dodecyl sulfate polyacrylamide gel electrophoresis and transferred onto a polyvinylidene difluoride (PVDF) membrane. The membrane was blocked with 5% BSA and incubated with mouse anti-FLAG antibody (Sigma-Aldrich, St. Louis, MO, USA) 1 h at room temperature. The blots were incubated with the appropriate secondary antibody, HRP-conjugated anti-mouse, and the blots were assayed with the ECL (Pierce, Waltham, MA, USA) detection system.

### Mutagenesis Assays

Random mutagenesis of the *BHLHE41* region (362-385aa) was performed with degenerate primers (see Table S1, supplemental material) using polymerase chain reaction (PCR). Briefly, PCR was performed in a total volume of 50 µL containing approximately 50 ng of plasmid samples, 20 pmol of each primer, 0.2 mM deoxyribonucleotide triphosphates, and 2.5

unit pfx DNA polymerase (Life Technologies, CA, USA) for the 12 cycles (95°C for 30 sec, 50°C for 30 sec, and 68°C for 14 min). Samples were then treated with DpnI restriction enzyme to remove the template DNA and transformed into *Escherichia coli* DH5α. Transformed cells were plated and selected on kanamycin containing an LB agar plate. We randomly picked 50 colonies and isolated plasmid DNA. The presence of variants was verified by DNA sequencing. Site-directed mutagenesis was carried out using the Stratagene QuickII-change Mutagenesis kit (La Jolla, CA, USA). The PCR products were digested with DpnI to remove template plasmid DNA and transformed into *E. coli* DH5α. The presence of the variants in *BHLHE41* was confirmed by DNA sequencing.

## RESULTS

### Sleep Phenotypes: Twin Cohort Undergoing Total Sleep Deprivation

Based on the study of He et al.,<sup>21</sup> we investigated *BHLHE41* variants in a cohort of 59 MZ (mean age ± SD 29.2 ± 6.8 y; 15 male and 44 female pairs) and 41 DZ (mean age ± SD 26.6 ± 7.6 y; 15 male and 26 female pairs) twin pairs evaluated for response to 38 h of sleep deprivation.<sup>6</sup> All twin pairs were the same sex. In the week prior to the sleep deprivation protocol, the mean estimated daily sleep time on actigraphy ± SD was 528 ± 103 min in the MZ twins and 502 ± 101 min in the DZ twins. We split the twins into two reference groups, Odds and Evens. Converting to hours, the mean (SD) were 7.04 (0.673) and 6.9 (0.818), respectively. The mean of the three unrelated subjects reported in Table 1 is very similar to these values (7.3 h). Pooling the reference distributions, the mean (SD) is 7.0 (0.75). Based on this reference, the z-scores for the mutation carrier and nonmutation carrier are  $(4.9-7.0)/0.75 = -2.80$ , which is smaller than one-third of the first percentile (0.00255). This would suggest that this is an extremely short mean sleep. In comparison, the



**Table 2**—Polysomnography data of total sleep, nonrapid eye movement, and rapid eye movement sleep in twins

	Carrier twin					Noncarrier twin				
	PSG Diagnostic <sup>a</sup>	PSG Adaptation <sup>b</sup>	PSG Baseline <sup>c</sup>	Avg <sup>d</sup>	PSG recovery <sup>e</sup>	PSG Diagnostic <sup>a</sup>	PSG Adaptation <sup>b</sup>	PSG Baseline <sup>c</sup>	Avg <sup>d</sup>	PSG recovery <sup>e</sup>
Total sleep	403.5	357.5	466	409	482	444.5	409	444.5	432.6	572.5
NREM sleep	291.5	254	346	297.1	388	300	249	333	294	371
REM sleep	101.5	99	115	105.1	82.5	138	157.5	108.5	134.6	193

In the laboratory we recorded sleep by EEG on 3 nights and compared the differences between the mutation carrier (c.1086C > T p.Tyr362His) and non-carrier for total sleep time, NREM sleep, and REM sleep amounts. Data are in minutes. <sup>a</sup> PSG Diagnostic: this was study done with electroencephalography (EEG)/electromyography (EMG) and assessment of oxygen saturation to rule out sleep apnea. <sup>b</sup> PSG Adaptation: this was study recording sleep by EEG/EMG/electro-oculography (EOG) on first night in our laboratory. <sup>c</sup> PSG Baseline: this was study recording sleep by EEG/EMG/EOG on night of sleep before sleep deprivation. <sup>d</sup> Avg: Average for the 3 nights of polysomnography (diagnostic, adaptation and baseline) before the sleep deprivation protocol. <sup>e</sup> PSG recovery: performed following the 38 hours of sleep deprivation protocol. NREM, nonrapid eye movement; REM, eye movement.

nonmutation carrier z-score is  $(6.07-7.0)/0.75 = -1.24$ , which corresponds to approximately the 11<sup>th</sup> percentile (0.1075). Although on the short side, the non mutation carrier had mean sleep that was not an outlier. The specific phenotypic characteristics of subjects studied are shown in Table 1 and detailed information can be found in Kuna et al.<sup>6</sup>

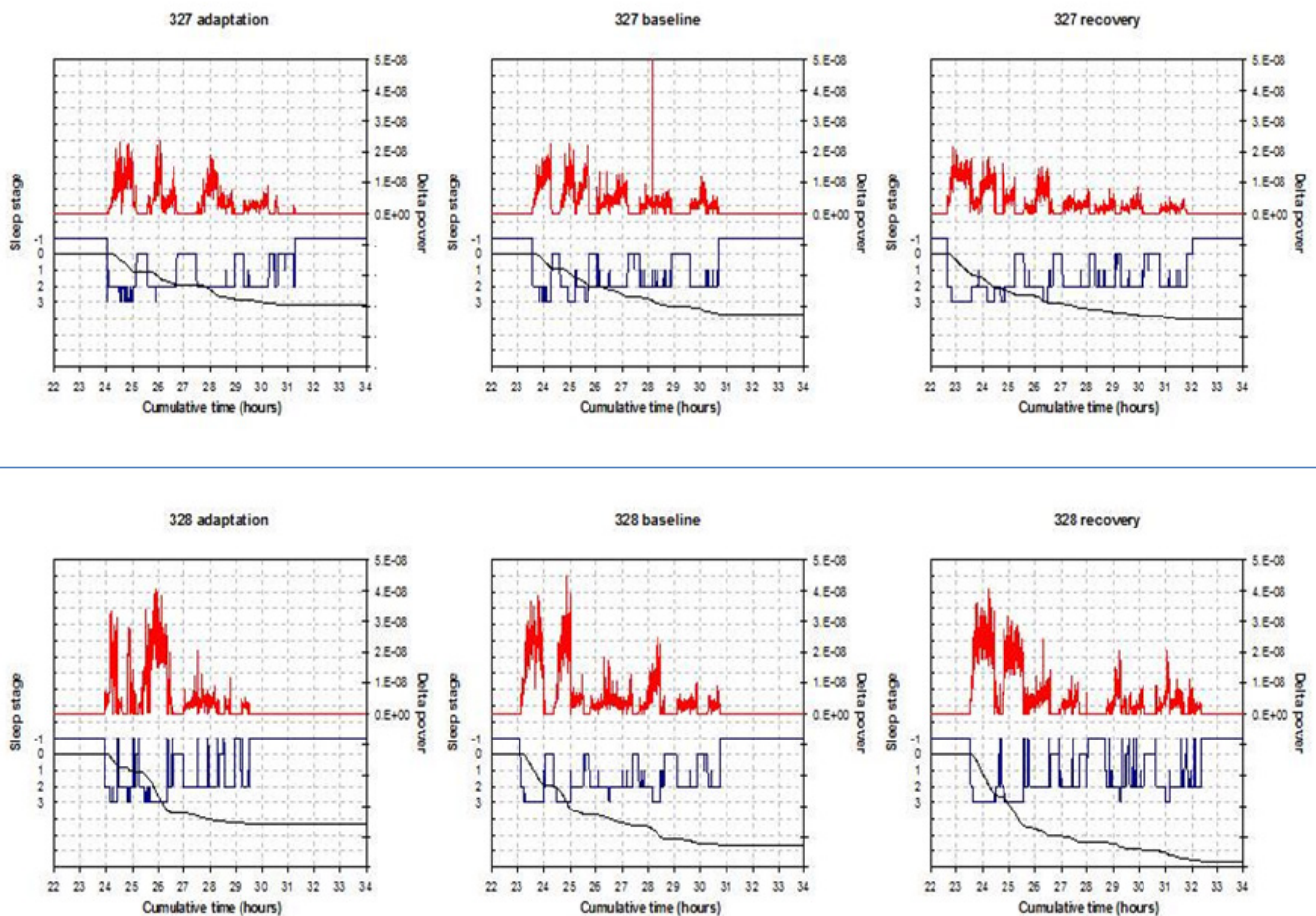
Using Sanger sequencing approach on the five exons of the gene, we identified a new variant of the *BHLHE41* at position c.1086C > T (p.Tyr362His) at Exon 5 in one member of one DZ pair (Figure S1, supplemental material). This variant is a non synonymous mutation that alters the amino acid sequence of BHLHE41 protein at position 362, shifting a tyrosine to histidine. Based on previous findings,<sup>2</sup> we hypothesized that the mutation carrier might have shorter mean sleep duration than the non carrier and tested this hypothesis using a one-sided *t*-test using data obtained from multiple nights of actigraphy. In addition, we questioned the possible role of the variants not only in sleep length but also in the response to sleep deprivation. The average sleep duration  $\pm$  SD by actigraphy over 7 to 8 nights for the mutation carrier was more than 1 h shorter ( $299.3 \pm 62.7$  min) compared to  $364.7 \pm 61.8$  min for the non carrier twin (one-sided *t*-test;  $P = 0.03$ ) (Table 1).

Subsequently, in the laboratory we recorded sleep by EEG on 3 nights and compared the differences between the mutation carrier (c.1086C > T p.Tyr362His) and non carrier for total sleep time (TST), NREM sleep, and REM sleep amounts (Table 2). The differences for TST between the twins (mutation carrier minus non carrier) in min over the 3 nights were as follows: -41.0, -51.5, and +21.5. The amounts of NREM, however, were very similar. The NREM amount after recovery sleep was 388 for the carrier and 371 for the noncarrier twin. NREM differences (min) were: -8.5, +5, and +13. The differences (min) in REM sleep were larger: -36.5, -58.5, and +6.5. During unrestricted recovery sleep for 1 night following 38 h without sleep, the carrier had much shorter TST (482.0 min) than the non carrier (572.5 min). Spectral analyses of the EEG during recovery sleep showed that the twin with the novel variant (p.Tyr362His) had higher delta power during NREM sleep, a putative measure of sleep drive<sup>26</sup> (Figure 1). It has been

demonstrated previously that short sleepers have increased delta power in comparison with long sleepers.<sup>27</sup> To measure cognitive vulnerability to sleep deprivation, we used the PVT and assessed subjects at baseline and in multiple test bouts during sleep deprivation. Despite evidence of higher sleep drive, the twin with the new variant had significantly fewer average lapses of performance on each 2-h ( $n = 19$ ) administration of the 10-min PVT (6.8 compared to 11.5, signed-rank one-sided  $P = 0.0004$ ) during sleep deprivation as shown in Table 1. Thus, the mutation was associated with resistance to the neurobehavioral effects of sleep deprivation (see further details in Tables 1 and 2).

### Sleep Phenotypes: Nonrelated Cohort Undergoing Chronic Partial Sleep Deprivation

We also searched for additional variants in *BHLHE41* in 213 other nonrelated healthy adults participating in experiments on the effects of chronic partial sleep deprivation.<sup>27</sup> We found a common non synonymous variant c.1151C > A (p.Pro384Gln) in three non-related individuals. This variant was in the same codon as that originally described by He et al.,<sup>21</sup> but resulted in a glutamine rather than arginine substitution. The sleep patterns for those individuals were, however, heterogeneous with unclear phenotypic differences (e.g., their average sleep durations based on 7 nights of recording by actigraphy were 6.5, 7.3, and 8.1 h), suggesting that this variant had distinct effect on BMAL/CLOCK transactivation (see details in Table 1). In a reference population of 162 subjects with actigraphy information, the mean  $\pm$  SD pre study actigraphic sleep duration was  $8.03 \pm 0.66$  h. Based on the nonrelated sample as reference, the z-scores for the nonrelated mutation carriers are -2.27, i.e., 1.2 percentile of normal distribution, -1.06, i.e., 14<sup>th</sup> percentile, 0.03, i.e., 51<sup>st</sup> percentile. However, the molecular data suggest an enhanced suppression of BMAL/CLOCK transactivation when 10 ng of plasmid is used and compared to the wild-type and the other mutants. In addition, the PVT for those individuals revealed distinct and heterogeneous results of the mean lapses across 5 nights of chronic partial sleep deprivation (details available in Table 1).



**Figure 1**—Delta power spectra data. Each of the three panels for each subject represents 1 night of sleep recording and the corresponding values of delta power. The top graphs are for the noncarrier variant (327) and the bottom graphs (328) are for the carrier of *BHLHE41* mutation (c.1086C > T p.Tyr362His). In each graph the hypnogram is in blue (-1 = wake, 0 = rapid eye movement, 1-3 = nonrapid eye movement (NREM)1-NREM3) and the delta power aligned with it is in red (for NREM sleep only). The black line shows the cumulatively dissipated delta power.

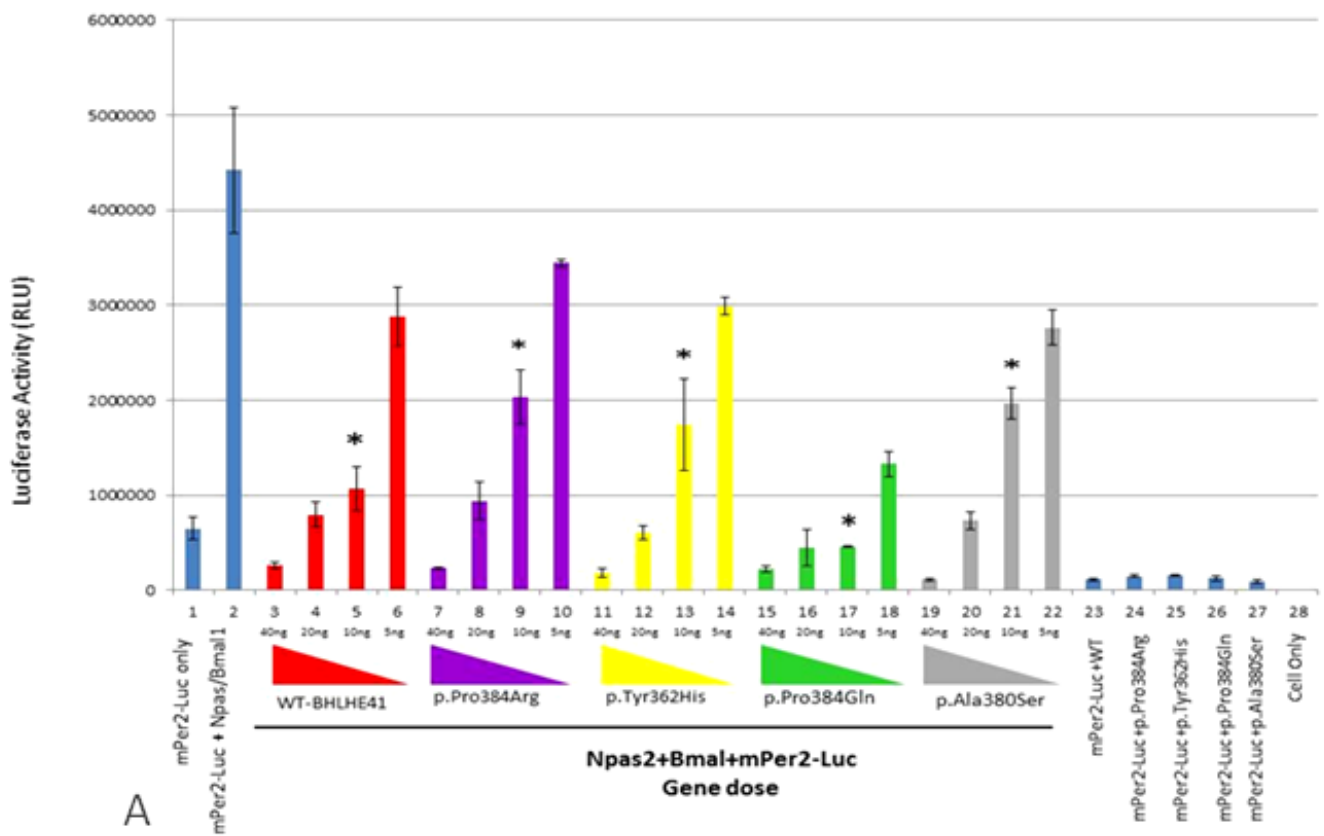
### Molecular Functional Studies of Identified Variants

Because one variant had an effect on sleep duration while the other did not; we used functional cell-based assays to address how the new variants we found affect the BMAL-CLOCK-NPAS2 machinery.

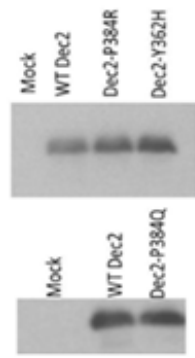
Therefore, at the molecular level we investigated the functional effects of both of these new variants, c.1086C > T (p.Tyr362His) and c.1151C > A (p.Pro384Gln) of *BHLHE41*, on CLOCK/BMAL1 and NPAS2/BMAL1 transactivation using an *in vitro* PER2:luciferase reporter assay in HEK 293T cell line (Figure 2). We also reproduced the previous experiments using constructs based on the mutation described by He et al.,<sup>21</sup> which also involves position 384 but a different amino acid change (p.Pro384Arg).

The new p.Tyr362His variant resulted in an inability of *BHLHE41* to suppress CLOCK/BMAL1 transactivation on the Per2:luciferase assay in HEK 293T cells (Figure S2, column 14-16, supplemental material) when a low amount of plasmid is used in the assay. Thus, this novel variant, even in a different amino acid residue, has an effect similar to the variant p.Pro384Arg described previously.<sup>21</sup> In contrast, the other new variant, p.Pro384Gln, resulted in strong inhibition of CLOCK/BMAL1 transactivation in a luciferase assay system. This is an

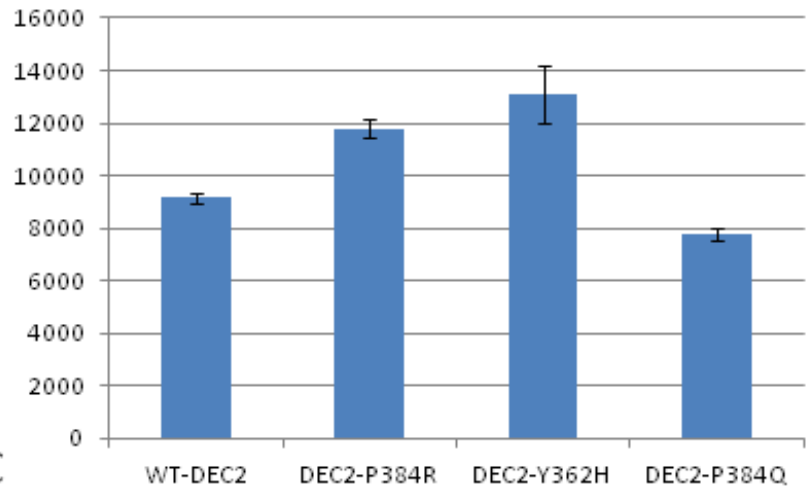
opposite effect compared to the new p.Tyr362His variant and the previously defined p.Pro384Arg variant (Figure S2, column 18-21). Thus, this variant p.Pro384Gln apparently had functional consequences at a molecular level similar to the wild-type without totally affecting the sleep phenotype, but showing a trend in sleep increase. As complementary data we assessed the effect of wild-type and *BHLHE41* variant alleles on transactivation driven by NPAS2/BMAL1, also using the PER2:luciferase reporter system (Figure 2A). The PER2:luciferase reporter assay results indicate that NPAS/BMAL1 transactivation is affected in a manner similar to CLOCK/BMAL1 according to each variant. The new p.Tyr362His variant resulted in an inability of *BHLHE41* to suppress NPAS2/BMAL1 transactivation when compared to the wild-type (Figure 2A, column 13). We also constructed a PER2:luciferase assay reporter for the mutation p.Pro384Arg,<sup>20</sup> which demonstrated a similar inability to inhibit NPAS2/BMAL1 transactivation at a low gene dose (Figure 2A, column 9). In contrast, p.Pro384Gln demonstrated an opposite inhibition of NPAS2/BMAL1 transactivation as shown in our CLOCK/BMAL1 transactivation assay, where p.Pro384Gln exhibits a strong inhibition on transactivation (Figure 2A, column 17). To see the effect of the mutations on the stability and expression levels of the *BHLHE41*, we carried



A



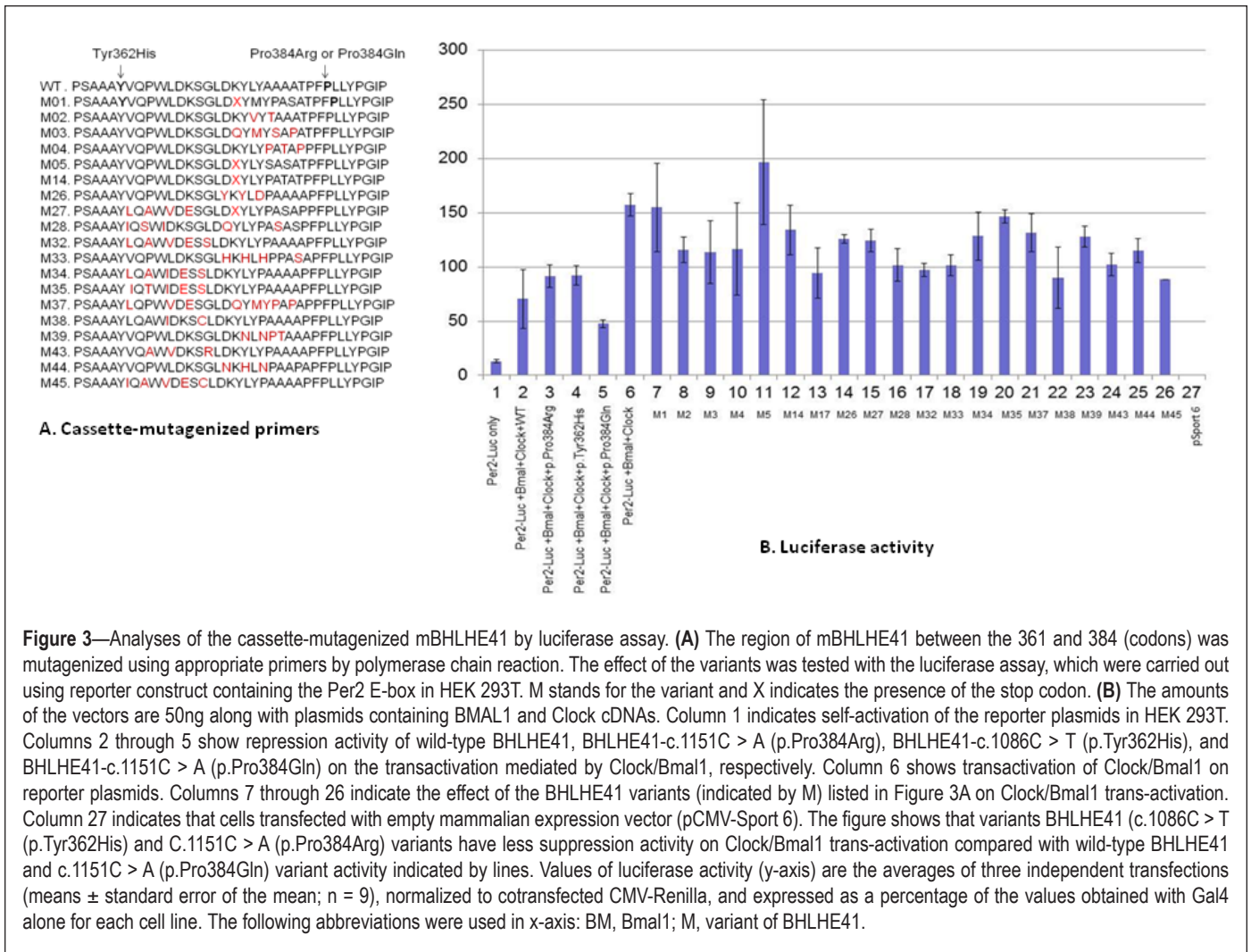
B



C

**Figure 2**—*In vitro* analyses of wild-type and variants mBHLHE41-NPAS2-Bmal1 transactivation (using HEK293T functional assays). **(A)** Luciferase assays were carried out with identical methodology to that described in Figure 2. Column 1 indicates background activity of the reporter plasmid (mPer2 promoter-Luc) in HEK 293T cell line in the absence of the Npas2/Bmal1 genes. Column 2 shows transactivation of the luciferase gene on the reporter plasmid by Npas2/Bmal1. Columns from 3 through 22 indicate the effect of the variant and wild-type BHLHE41 on the transactivation of Npas2/Bmal1 in gene doses (40 ng, 20 ng, 10 ng and 5 ng) dependent manner. Red, purple, yellow, green, and gray colors represent BHLHE41-wild-type, BHLHE41 (p.Pro384Arg), BHLHE41 (p.Tyr362His), BHLHE41 (p.Pro384Gln), and BHLHE41 (p.Ala380Ser), respectively. Cells expressing reporter plasmid (mPer2-Luc) along with wild-type BHLHE41 (column 23) and variants of BHLHE41 (columns 24-27) show comparable suppressor activity in the absence of Npas2/Bmal1. Column 28 indicates the background luciferase reading from HEK 293T. Experiments were carried out with triplicates in each point. Luciferase activities (means  $\pm$  standard error of the mean;  $n = 9$ ) were measured after a 20-h cell incubation and statistically compared with repression activity of the wild-type BHLHE41 ( $*P < 0.05$ ). The effect of the variants can be seen when 10 ng of plasmid were used in the assay. **(B)** Western Blot (WB) analysis of wild-type and variant's mBHLHE41. WB was carried out using anti-Flag with 30  $\mu$ g of total protein. Enhanced chemiluminescence (ECL) method was used detect the presence of the proteins. The analysis of WB indicates that wild-type and variants were expressed in a comparable level. Arrows indicate the expressed BHLHE41 proteins. **(C)** Quantification of the protein levels by Western blot results was performed using the ImageJ software. No statistical difference was found in the protein levels.





**Figure 3**—Analyses of the cassette-mutagenized mBHLHE41 by luciferase assay. **(A)** The region of mBHLHE41 between the 361 and 384 (codons) was mutagenized using appropriate primers by polymerase chain reaction. The effect of the variants was tested with the luciferase assay, which were carried out using reporter construct containing the Per2 E-box in HEK 293T. M stands for the variant and X indicates the presence of the stop codon. **(B)** The amounts of the vectors are 50ng along with plasmids containing BMAL1 and Clock cDNAs. Column 1 indicates self-activation of the reporter plasmids in HEK 293T. Columns 2 through 5 show repression activity of wild-type BHLHE41, BHLHE41-c.1151C > A (p.Pro384Arg), BHLHE41-c.1086C > T (p.Tyr362His), and BHLHE41-c.1151C > A (p.Pro384Gln) on the transactivation mediated by Clock/Bmal1, respectively. Column 6 shows transactivation of Clock/Bmal1 on reporter plasmids. Columns 7 through 26 indicate the effect of the BHLHE41 variants (indicated by M) listed in Figure 3A on Clock/Bmal1 trans-activation. Column 27 indicates that cells transfected with empty mammalian expression vector (pCMV-Sport 6). The figure shows that variants BHLHE41 (c.1086C > T (p.Tyr362His) and c.1151C > A (p.Pro384Arg) variants have less suppression activity on Clock/Bmal1 trans-activation compared with wild-type BHLHE41 and c.1151C > A (p.Pro384Gln) variant activity indicated by lines. Values of luciferase activity (y-axis) are the averages of three independent transfections (means  $\pm$  standard error of the mean; n = 9), normalized to cotransfected CMV-Renilla, and expressed as a percentage of the values obtained with Gal4 alone for each cell line. The following abbreviations were used in x-axis: BM, Bmal1; M, variant of BHLHE41.

out Western blot analysis followed by quantification analysis. Analysis of the blots indicated that all alleles had comparable levels of expression as wild-type *BHLHE41* (Figure 2). These results indicate that the charge of amino acid R groups at the position of 384 is important on the suppression activity of the BHLHE41. Both p.Tyr362His and p.Pro384Arg mutants have positively charged R groups whereas p.Pro384Gln has a negatively charged group. Although p.Pro384Gln has a strong affinity toward the E-box, it is possible that duration BHLHE41 p.Pro384Arg variant is the same as the wild-type BHLHE41 on E-box, and therefore we do not see the phenotype at a physiological level. However, this observation needs to be shown in the future.

To evaluate whether the described variants changed the transcriptional repressor activity of *BHLHE41* independently of E-box binding, we carried out GAL4-based transcription regulatory assays (Figure S3, supplemental material). HEK293T and Neuro2A cells were transiently transfected with pL8G5 (a reporter plasmid with Upstream Activation Sequence (UAS) and LexA operator sites) along with pBind-BHLHE41 and pLexA-VP16 plasmid. In this assay, transcriptional activity is normally high as the LexA-VP16 chimera is strongly active. Repressors can then be evaluated independently from their DNA binding activity as they are tethered to the UAS, an

enhancer to which Gal4 specifically binds to activate gene transcription site in the reporter by GAL4. Cells expressing either the wild-type or variant constructs all had comparable activity, indicating the repressor activity of the *BHLHE41* gene is intact. This indicates variants have no effect on the other transcriptional activity of *BHLHE41* independently of E-box binding. To see if this result is not a consequence of the different expression level and protein stability, cell extracts obtained from both cell lines were subjected to Western blot analysis and then expression levels of both mutant and wild-type were quantified (Figure S3, supplemental material). The results indicated that both mutant and wild-type were expressed at comparable level. Neither WT nor *BHLHE41* variants were active in this assay, suggesting they do not inhibit E-box transcription by physically interacting with CLOCK or BMAL1, which is consistent with previous work showing that BHLHE41 directly binds to the E-box and either activates or suppresses gene activation.<sup>28</sup> Thus, functional variants of *BHLHE41* can reduce affinity toward E-box binding.

### Results From Random Mutagenesis

To determine if other possible mutations in the exon 5 region of *BHLHE41* also alter repression of CLOCK/BMAL1 transactivation, we did random mutagenesis of amino acids between

positions 362 to 384 in exon 5 by PCR using site-specific degenerate primers (Table S1, supplemental material). We randomly selected 50 mutagenized plasmids and tested them in the CLOCK/BMAL/Per2:luciferase transactivation assay (Figure 3). We found that several mutagenized plasmids altered transcriptional repression, highlighting the importance of exon 5 in suppression of CLOCK/BMAL1 activity and indicating that this area is a potential “hot spot” for functional variants. Other variants in this region result in the loss of repression activity of the BHLHE41 on CLOCK/BMAL1 activation (Figure 3). In particular, we named the possible mutants in our constructions with the letter M followed by a number representing the *in vitro* mutations. The M1, M5, and M35 mutants lost its repression activity on CLOCK/BMAL1 transactivation. Interestingly, one of these constructs, M33, harbored an Ala to Ser amino acid change at position 380 (close to the 384 candidate area). Analysis of the 1000 Genome Project data and National Center for Biotechnology Information shows that this allele (p.Ala380Ser) (rs1057206) occurs naturally in the CEPH population (European from *Centre d'Etude du Polymorphisme Humain*), although it is rare and sleep data are not available. This *in silico* mutation has a similar effect on CLOCK/BMAL1 transactivation as BHLHE41-p.Tyr362His and BHLHE41-p.Pro384Arg variants found in our subjects. Overall, these results indicate that variants in the region between p.Tyr362His and p.Pro384Arg result in altered repression activity of BHLHE41 on CLOCK/BMAL1 activation and likely will affect sleep duration and response to sleep deprivation.

## DISCUSSION

Our studies reveal that there are other variants of *BHLHE41* in the human population that affect sleep duration, i.e., p.Tyr362His. The variant that led to an altered sleep phenotype affected the ability of *BHLHE41* to inhibit both CLOCK/BMAL1 and NPAS2/BMAL1 transactivation. Another variant found in the current study had no obvious effect on sleep duration (p.Pro384Gln) and no effect on CLOCK/BMAL1 or NPAS2/BMAL1 transactivation. Thus, it seems reasonable to propose that this aspect of the molecular machinery of the circadian clock is involved in setting sleep duration and also the level of sleep drive. Thus, *BHLHE41* likely plays a role in both the clock machinery and sleep homeostatic mechanisms.

The mammalian molecular clock system includes a number of genes and their protein product complexes<sup>29–30</sup> involved in interconnected feedback loops of transcriptional and translational regulation through enhancer elements such as CACGTG E-box, D-box, and ROR/REV-ERB binding elements (RORE).<sup>31</sup> The E-box is believed to be an important element in the molecular oscillatory system, because it is the binding site for the CLOCK/BMAL1 heterodimer, which upregulates expression of various clock genes, including *BHLHE41*, *BHLHE40*, *PER1*, *Dbp*, and *Rev-erb*. In this regulatory model, *PER*, *CRY*, and *BHLHE41* work as negative factors for transcription from E-box determined promoters, and the E-box-like element E-box (CACGTT) has been shown to be involved in the direct regulation of *PER2* and *CRY1* genes by CLOCK/BMAL1.<sup>22</sup>

Our study extends the results of He et al.,<sup>21</sup> who found a point mutation in the *BHLHE41* gene in two members of a family of short sleepers. The individuals in their study had habitual self-reported total sleep time per 24-h day that was much shorter in

mutation carriers (average 6.25 h) compared with the noncarriers (average 8.06 h). We have identified two new variants of *BHLHE41*. One of these variants had an effect on sleep duration and inability to suppress CLOCK/BMAL1 activation of gene transcription, and the other did not. Given that the sample sizes used are not particularly large (four variants in a total of 589 samples sequenced) it seems likely that variants of *BHLHE41* will occur fairly commonly. The phenotypic information we obtained from the twin with the novel variant extends previous descriptions of the effect of *BHLHE41* variants on sleep. The carrier twin demonstrated significantly fewer average lapses of performance alertness compared with his brother. We can hypothesize that this gene plays a role in sleep length and affects resistance to sleep loss. We observed, however, in addition, that although sleep duration was shorter, there was a relative preservation of the amount of NREM sleep. There was minimal difference in the total amounts of NREM sleep between the twin with the mutation and the sibling. The twin with the mutation also had higher delta power, a putative measure of sleep drive. That behavioral impairment with sleep loss is lower in the twin with the mutation but delta power is higher, adding further questions about what delta power is actually assessing. Previous studies of short sleepers, albeit not evaluating genetic associations, have shown that short sleepers have higher delta power throughout the day than long sleepers.<sup>26</sup> The rate of increase in delta power during wakefulness and decline during sleep are, however, the same.<sup>8,26</sup> Thus, short sleepers terminate sleep at higher delta power than long sleepers. Data from our twin with the mutation are compatible with this concept.

Even in the absence of sleep, i.e., when kept awake, short sleepers show an earlier termination of the rise of the nocturnal melatonin in the blood and an earlier increase in morning cortisol than long sleepers.<sup>32</sup> Investigators who observed these differences conjectured that the different timing of these neuro-hormonal changes, even in the absence of sleep, must result from variations of clock genes. Our data, and that of He et al.,<sup>21</sup> support this assertion, and it will be of value in the future to investigate neuro-hormonal profiles in the absence of sleep in individuals with functional *BHLHE41* variants. It will also be of value in future studies to evaluate other family members.

Chronic partial sleep deprivation in healthy humans leads not only to performance impairment but also to metabolic consequences, i.e., insulin resistance,<sup>33–36</sup> alteration in phosphorylation of AKT in fat cells in response to insulin,<sup>36</sup> decreased leptin, increased ghrelin, increased appetite<sup>37</sup> and caloric intake,<sup>38</sup> weight gain,<sup>38</sup> and preference for high calorie foods,<sup>37–40</sup> particularly during late-night hours.<sup>38</sup> This has led to the concept that sleep deprivation is a risk factor for obesity.<sup>9</sup> Our data do not suggest that there are metabolic consequences for the *BHLHE41* variations because the BMI of the twins is almost identical (23.9 kg/m<sup>2</sup> for the carrier and 25.3 kg/m<sup>2</sup> for the noncarrier). However, further study of the consequences of *BHLHE41* variants on metabolism is warranted.

In addition to Clock, NPAS2 is also a binding partner of BMAL1 and has been proposed as a specific energy sensor for the control of rest/activity.<sup>17,19,20</sup> NPAS2 alters sleep/wake amounts and responses to stimuli other than light, in particular restricted feeding, as revealed by studies of NPAS2 knockout mice.<sup>13,17,19</sup> We found variants in *BHLHE41* have identical effects on both



CLOCK/BMAL1 and NPAS2/BMAL1 transactivation. Thus, whether the functional effect of *BHLHE41* variants is through NPAS2 or CLOCK remains an open question. We show that like p.Tyr362His, this new variant (in the twin subject) results in a loss of repression activity of NPAS2/BMAL1 whereas the p.Pro384Gln has a strong E-box binding activity. Our results indicate that the charge of amino acid R groups at the position of 384 is important in the suppression activity of the *BHLHE41*. Both p.Tyr362His and p.Pro384Arg mutants have positively charged R groups, whereas p.Pro384Gln has a negatively charged group. The presence of the negatively charged amino acids enhances the *BHLHE41* activity on E-box. We speculate p.Pro384Gln has a strong and fast ability to bind to the E-box region, but has an even faster release from the E-box, which makes it difficult to detect and characterize the behavior phenotype. Cell culture studies have shown that *BHLHE41* does not always act as a transcriptional repressor of E-box-controlled genes because this varies by cell type depending in part on whether or not BMAL1 is present.<sup>22,23,42</sup>

Overall, the new variant (p.Tyr362His) also alters the architecture of sleep, allowing the same amount of NREM sleep in a shorter total sleep time and having a protective effect on neurobehavioral performance in response to sleep deprivation. We explored the biochemical alteration on BMAL/CLOCK/NPAS transactivation caused by different variants of *BHLHE41* in the circadian machinery. We found that structural changes in the protein can affect transient transactivation. It was demonstrated previously that *BHLHE41* binds to class B E-box elements (CACGTG) as a homodimer and to repress the transcription of target genes in an HDAC-dependent manner.<sup>47</sup> Thus, although the role of clock genes such as *BHLHE41* is well established in controlling the diurnal rhythm of gene expression in many organs,<sup>41-43</sup> they may also play a fundamental role in determining the duration of sleep that an individual needs. We further show; based on random mutagenesis, that there are likely other variants of *BHLHE41* that can alter sleep duration and sleep loss response. In summary, our study provides complete phenotype information including the polysomnography, delta power, and performance evaluation in humans, not simply measuring less rebound sleep. We implemented additional approaches: prima facie estimate of the frequency of *BHLHE41* alleles in humans, and evidence that more alleles with this phenotype are likely to emerge. Also, we suggest the role of canonical clock factors in sleep homeostasis.

### Important Considerations

Our results suggest that variants of *BHLHE41* affecting sleep duration and response to sleep loss may be more common than previously appreciated. Moreover, there are a number of other variants of this gene that have similar functional effects on the molecular machinery of the clock. But, whether these variants occur in human populations is unknown. Larger studies of variants of this and other relevant clock genes in human populations with short sleep are needed. Our data also suggest that altering the repression of CLOCK/BMAL1 and/or NPAS2/BMAL1 has a direct effect on setting the duration of sleep and sleep architecture with a relative preservation of amounts of NREM sleep in the face of shorter sleep. The neuronal basis for this effect is unknown and needs to be studied. This adds

additional evidence that at a molecular level the circadian clock and sleep homeostasis are not independent processes. However, these findings about a clock-related gene could be independent of its function in the circadian clock. This work provides an important second allele of *BHLHE41* associated with sleep deprivation and for the first time shows the role of *BHLHE41* in resistance to sleep deprivation in humans, confirming previous work on the resistance to sleep deprivation in rodents.<sup>21</sup> We also highlighted the possible role of canonical clock factors in sleep homeostasis. Future research may elucidate possible mechanisms of the gene variants' role in sleep length as well as reveal target molecules that enhance sleep homeostasis and improve neurobehavioral responses to sleep deprivation.

### ACKNOWLEDGMENTS

The authors thank Dr. Fu for providing the plasmids constructions. We thank Saarene Panossian for help with sequence analysis. We thank Cuiping Hou, Micah Romer, and Nada Abdel-Magid for their collaboration in sample organization and DNA plate preparation. We thank Ron Anafi and Diego Mazzotti for the critical reading of this manuscript. Author contributions: Dr. Pelligrino performed and analyzed the data of the genetic analyses including the DNA extraction, Sanger sequencing and data analysis. She contributed to writing the manuscript. Dr. Kavakli performed all functional assays and cloning experiments and contributed to writing the manuscript. Both contributed equally to the manuscript. Dr. Goel provided the cohort of non-related individuals and the respective sleep phenotypes. Dr. Cardinale helped with the Sanger primer selection and data interpretation. Dr. Dinges evaluated and studied the cohort of nonrelated individuals who underwent chronic partial sleep deprivation. Dr. Kuna was primarily responsible for the studies of twins involving assessment of response to sleep deprivation. Dr. Maislin was responsible for statistical analysis and data interpretation (EEG phenotypes). Dr. Van Dongen contributed to study design of the twin study and EEG data analyses. Dr. Tufik added fundamental comments on sleep deprivation and data interpretation. Dr. Hogenesch designed and provided the resources to conduct the functional studies and co-authored the manuscript. Dr. Hakonarson provided laboratory structure and supervision for the Sanger sequencing and genetic analysis and edited and co-authored the manuscript. Dr. Pack designed the project, coordinated the main cohort sample collection (twin cohort), provided the phenotypic information and co-authored the manuscript.

### DISCLOSURE STATEMENT

This was not an industry supported study. This work was supported in part by NIH grant P01 HL094307 and Institutional Development Fund from the Center for Applied Genomics at The Children's Hospital of Philadelphia. Data analyzed from experiments on chronic partial sleep deprivation were supported by the National Space Biomedical Research Institute through NASA NCC 9-58, NIH NR004281, CTCR UL1RR024134 and the Department of the Navy, Office of Naval Research Award No. N00014-11-1-0361. Drs Pellegrino and Kavakli are co-first authors. Dr. Dinges is Editor-in-Chief of *SLEEP*. Dr. Van Dongen has received grant funding from Pulsar Informatics, Boeing Company, Battelle Center for Human Performance &

Safety, and Institutes for Behavior Resources; has received consulting fees from Pulsar Informatics and FedEx Express; and has participated in a paid speaking engagement with the Ohio Sleep Medicine Institute. The other authors have indicated no financial conflicts of interest.

## REFERENCES

- Mignot E. Why we sleep: the temporal organization of recovery. *PLoS Biol* 2008;6:e106.
- Van Dongen HP, Baynard MD, Maislin G, Dinges DF. Systematic interindividual differences in neurobehavioral impairment from sleep loss: evidence of trait-like differential vulnerability. *Sleep* 2004;27:423–33.
- Basner M, Mollicone D, Dinges DF. Validity and sensitivity of a brief psychomotor vigilance test (PVT-B) to total and partial sleep deprivation. *Acta Astronaut* 2011;69:949–59.
- Basner M, Dinges DF. Maximizing sensitivity of the psychomotor vigilance test (PVT) to sleep loss. *Sleep* 2011;34:581–91.
- Killgore WD. Effects of sleep deprivation on cognition. *Prog Brain Res* 2010;185:105–29.
- Kuna ST, Maislin G, Pack FM, et al. Heritability of performance deficit accumulation during acute sleep deprivation in twins. *Sleep* 2012;35:1223–33.
- Borbely AA. A two process model of sleep regulation. *Hum Neurobiol* 1982;1:195–204.
- Borbely AA. The S-deficiency hypothesis of depression and the two-process model of sleep regulation. *Pharmacopsychiatry* 1987;20:23–9.
- Borbely AA, Achermann P. Sleep homeostasis and models of sleep regulation. *J Biol Rhythms* 1999;14:557–68.
- Achermann P. The two-process model of sleep regulation revisited. *Aviat Space Environ Med* 2004;75:A37–43.
- Dijk DJ, Lockley SW. Integration of human sleep-wake regulation and circadian rhythmicity. *J Appl Physiol* 2002;92:852–62.
- Tononi G, Cirelli C. Sleep function and synaptic homeostasis. *Sleep Med Rev* 2006;10:49–62.
- Franken P, Dijk DJ. Circadian clock genes and sleep homeostasis. *Eur J Neurosci* 2009;29:1820–9.
- Wisor JP, Pasumarthi RK, Gerashchenko D, et al. Sleep deprivation effects on circadian clock gene expression in the cerebral cortex parallel electroencephalographic differences among mouse strains. *J Neurosci* 2008;28:7193–201.
- Naylor E, Bergmann BM, Krauski K, et al. The circadian clock mutation alters sleep homeostasis in the mouse. *J Neurosci* 2000;20:8138–43.
- Franken P, Lopez-Molina L, Marcacci L, Schibler U, Tafti M. The transcription factor DBP affects circadian sleep consolidation and rhythmic EEG activity. *J Neurosci* 2000;20:617–25.
- Dudley CA, Erbel-Sieler C, Estill SJ, et al. Altered patterns of sleep and behavioral adaptability in NPAS2-deficient mice. *Science* 2003;301:379–83.
- Wisor JP, O'Hara BF, Terao A, et al. A role for cryptochromes in sleep regulation. *BMC Neurosci* 2002;3:20.
- Franken P, Dudley CA, Estill SJ, et al. NPAS2 as a transcriptional regulator of non-rapid eye movement sleep: genotype and sex interactions. *Proc Natl Acad Sci U S A* 2006;103:7118–23.
- Mongrain V, La Spada F, Curie T, Franken P. Sleep loss reduces the DNA-binding of BMAL1, CLOCK, and NPAS2 to specific clock genes in the mouse cerebral cortex. *PLoS One* 2011;6:e26622.
- He Y, Jones CR, Fujiki N, et al. The transcriptional repressor DEC2 regulates sleep length in mammals. *Science* 2009;325:866–70.
- Hamaguchi H, Fujimoto K, Kawamoto T, et al. Expression of the gene for Dec2, a basic helix-loop-helix transcription factor, is regulated by a molecular clock system. *Biochem J* 2004;382:43–50.
- Honma S, Kawamoto T, Takagi Y, et al. Dec1 and Dec2 are regulators of the mammalian molecular clock. *Nature* 2002;419:841–4.
- Fujimoto K, Hamaguchi H, Hashiba T, Nakamura T, Kawamoto T, Sato F, et al. Transcriptional repression by the basic helix-loop-helix protein Dec2: multiple mechanisms through E-box elements. *Int J Mol Med* 2007;19:925–32.
- Achermann P, Dijk DJ, Brunner DP, Borbely AA. A model of human sleep homeostasis based on EEG slow-wave activity: quantitative comparison of data and simulations. *Brain Res Bull* 1993;31:97–113.
- Aeschbach D, Cajochen C, Landolt H, Borbely AA. Homeostatic sleep regulation in habitual short sleepers and long sleepers. *Am J Physiol* 1996;270:R41–53.
- Goel N, Banks S, Mignot E, Dinges DF. DQB1\*0602 predicts interindividual differences in physiologic sleep, sleepiness, and fatigue. *Neurology* 2010;75:1509–19.
- St-Pierre B, Flock G, Zacksenhaus E, Egan SE. Stra13 homodimers repress transcription through class B E-box elements. *J Biol Chem* 2002;277:46544–51.
- Lowrey PL, Takahashi JS. Mammalian circadian biology: elucidating genome-wide levels of temporal organization. *Annu Rev Genomics Hum Genet* 2004;5:407–41.
- Ozaki N, Noshiro M, Kawamoto T, et al. Regulation of basic helix-loop-helix transcription factors Dec1 and Dec2 by RORalpha and their roles in adipogenesis. *Genes Cells* 2012;17:109–21.
- Aeschbach D, Sher L, Postolache TT, Matthews JR, Jackson MA, Wehr TA. A longer biological night in long sleepers than in short sleepers. *J Clin Endocrinol Metab* 2003;88:26–30.
- Aldabal L, Bahammam AS. Metabolic, endocrine, and immune consequences of sleep deprivation. *Open Respir Med J* 2011;5:31–43.
- Buxton OM, Pavlova M, Reid EW, Wang W, Simonson DC, Adler GK. Sleep restriction for 1 week reduces insulin sensitivity in healthy men. *Diabetes* 2010;59:2126–33.
- Spiegel K, Knutson K, Leproult R, Tasali E, Van Cauter E. Sleep loss: a novel risk factor for insulin resistance and Type 2 diabetes. *J Appl Physiol* 2005;99:2008–19.
- Broussard JL, Ehrmann DA, Van Cauter E, Tasali E, Brady MJ. Impaired insulin signaling in human adipocytes after experimental sleep restriction: a randomized, crossover study. *Ann Intern Med* 2012;157:549–57.
- Spiegel K, Tasali E, Penev P, Van Cauter E. Brief communication: Sleep curtailment in healthy young men is associated with decreased leptin levels, elevated ghrelin levels, and increased hunger and appetite. *Ann Intern Med* 2004;141:846–50.
- Spaeth AM, Dinges DF, Goel N. Effects of experimental sleep restriction on weight gain, caloric intake, and meal timing in healthy adults. *Sleep* 2013;36:981–90.
- Van Cauter E, Ehrmann DA. Sleep and metabolism. Preface. *Best Pract Res Clin Endocrinol Metab* 2010;24:vii–viii.
- Van Cauter E, Knutson KL. Sleep and the epidemic of obesity in children and adults. *Eur J Endocrinol* 2008;159:S59–66.
- Knutson KL, Van Cauter E. Associations between sleep loss and increased risk of obesity and diabetes. *Ann N Y Acad Sci* 2008;1129:287–304.
- Tsang AH, Sanchez-Moreno C, Bode B, Rossner MJ, Garaulet M, Oster H. Tissue-specific interaction of Per1/2 and Dec2 in the regulation of fibroblast circadian rhythms. *J Biol Rhythms* 2012;27:478–89.
- Pizarro A, Hayer K, Lahens NF, Hogenesch JB. CircaDB: a database of mammalian circadian gene expression profiles. *Nucleic Acids Res* 2013;41(Database issue):D1009–13.
- Johns MW. A new method for measuring daytime sleepiness: the Epworth sleepiness scale. *Sleep* 1991;14:540–5.
- Buyse DJ, Reynolds CF 3rd, Monk TH, Berman SR, Kupfer DJ. The Pittsburgh Sleep Quality Index: a new instrument for psychiatric practice and research. *Psychiatry Res* 1989;28:193–213.
- Hori T, Sugita Y, Koga E, et al. Proposed supplements and amendments to 'A Manual of Standardized Terminology, Techniques and Scoring System for Sleep Stages of Human Subjects', the Rechtschaffen & Kales (1968) standard. *Psychiatry Clin Neurosci* 2001;55:305–10.
- Finelli LA, Baumann H, Borbely AA, Achermann P. Dual electroencephalogram markers of human sleep homeostasis: correlation between theta activity in waking and slow-wave activity in sleep. *Neuroscience* 2000;101:523–9.
- Kondo J, Sato F, Fujimoto K, et al. 57Arg in the bHLH transcription factor DEC2 is essential for the suppression of CLOCK/BMAL2-mediated transactivation. *Int J Mol Med* 2006;17:1053–6.

## SUPPLEMENTAL MATERIAL

**Table S1**—Primers used in this study.

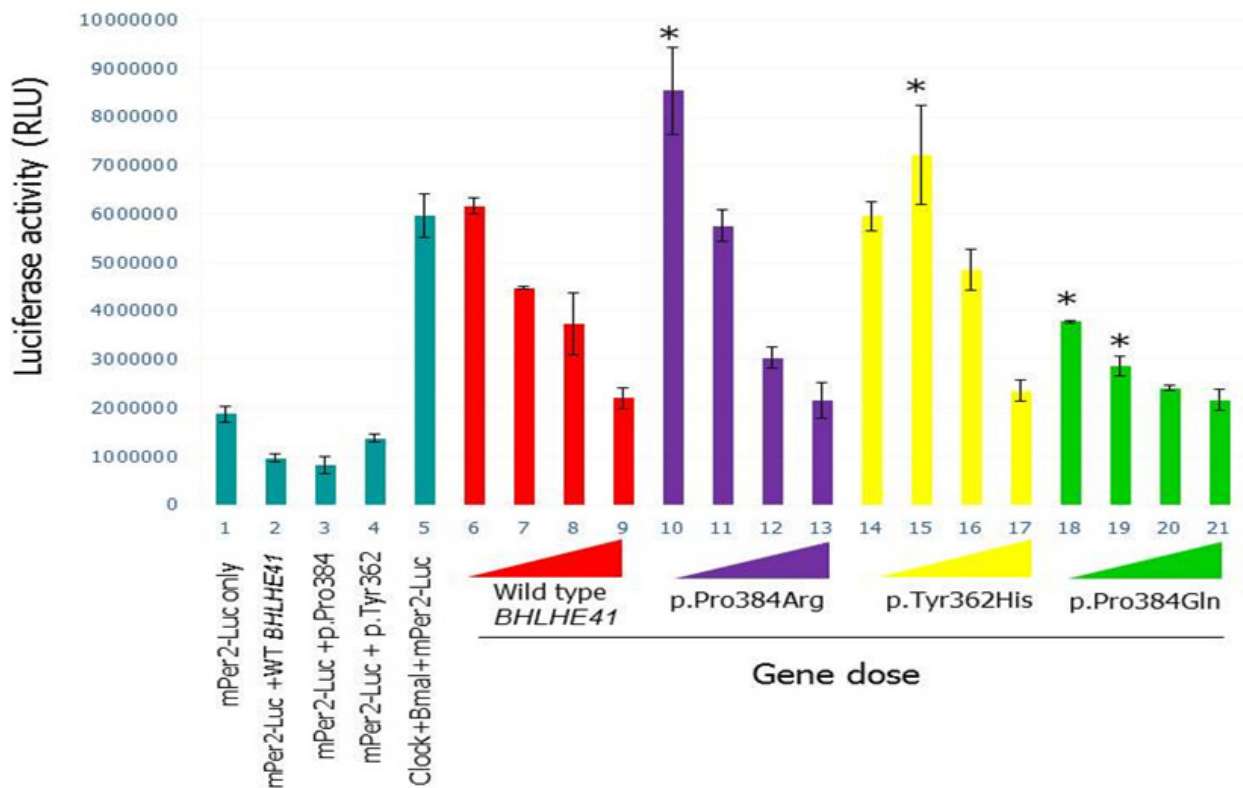
Primer Name	Sequence
BHLHE41 -Y362H-1	GCTGTCGCCGTCCGCCGCCGCC <u>AC</u> GTACAGCCCTGGCTAGACAAG
BHLHE41 -Y362H-2	CTTGTCTAGCCAGGCTGTACGTGGCGGCGGGCGGACGGCGACAGC
BHLHE41 -P385R-1	CCCGGCGGGCGGCTGCCGCCCTTCAGGCTGCTATAACC
BHLHE41 -P385R-2	GGGTATAGCAGCCTGAAGGGGCGGCAGCCGCCGCCGGG
BHLHE41 -P385Q-1	CCCGGCGGGCGGCTGCCGCCGAGTTCCCGCTGCTATAACC
BHLHE41 -P385Q-2	GGGTATAGCAGCGGGAAGTCCGGCGGCAGCCGCCGCCGGG
BHLHE41 -A380S-1	GTATCTGTACCCCGCGGCGAGCGCGCCCTTCCCGCTGC
BHLHE41 -A380S-2	GCAGCGGGAAAGGGCGCGCTCGCCGCCGGGTACAGATAC
Deg1BHLHE41 -1	CCGCCGCCGCTACDTACAGBCCTGGRTAGACRAGAGCDGCCTGG ACAAG
Deg1BHLHE41 -2	CTTGTCCAGGCDGCTCTRGTTARCCAGGBCTGTADGTAGGCGGCGGG
Deg2BHLHE41 -1	GCCGCCTACGTARAGCCCBGGCTABACAAAGDGGCGCDTGGACAAGTATCTG
Deg2BHLHE41 -2	CAGATACTTGTCCADGCCGCDCTTGTBTAGCCBGGGCTRTACGTAGGCGGC
Deg3BHLHE41 -1	CAAGAGCGGCCTGBACAAAGDATCTGBACCCCBGGCGBCCGCGCCCTTCCC
Deg3BHLHE41 -2	GGGAAGGGCGCGBCGCCBGGGGTBCAGATDCTTGTBCAGGCCGCTCTTG
Deg4BHLHE41 -1	GAGCGGCCTGGACRAGTATDTGTACRCCGCGDCGGCCDCGCCCTTCCC CGC
Deg4BHLHE41 -2	GCGGGGAAGGGCGDGGCCGDCGCGGRGTACADATACTRGTCCAGGCCG CTC

Underlined nucleotides are corresponding amino acid changes.

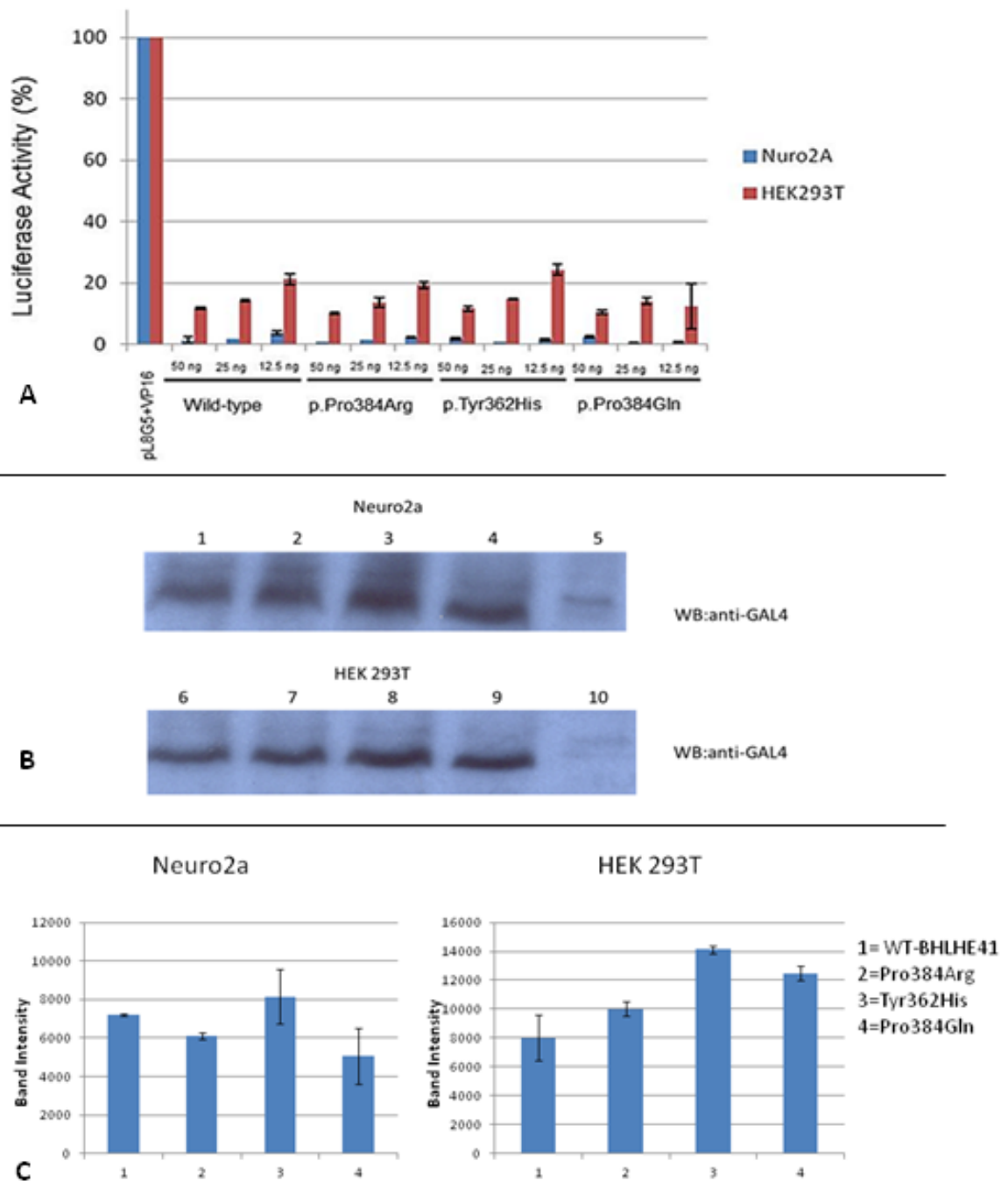


**Figure S1**—Identification of the novel variant (p.Tyr362His) through Sanger DNA sequencing. This figure illustrates the nucleotide change detected by Sequencher Software (<http://genecodes.com/>) in one of the twin samples. The base corresponds to a substitution C > T, which results in amino acid substitution of Tyr into His at the position of 362 on the *BHLHE41* gene.





**Figure S2**—Luciferase cell-based experiments using BHLHE41 variants, Per2 promoter and E-Box BMAL/CLOCK transactivation. *In vitro* analyses using a reporter construct containing the Per2 E-box of wild-type and variants mBHLHE41 using HEK293T cells in functional assays. Experiments were carried out in triplicate at each point. Luciferase activities were measured after a 20-h cells incubation (means  $\pm$  standard error of the mean; n = 9). Column 1 indicates background activity of the reporter plasmid (mPer2:Luc) in the HEK 293T cell line in the absence of the trans-Clock/Bmal1 genes. Cells expressing mPer2:Luc along with wild-type (column 2) and BHLHE41 mutant variants (columns 3 and 4) show comparable suppressor activity in the absence of CLOCK/BMAL1. Column 5 shows transactivation of the luciferase gene on the reporter plasmid by Clock/Bmal1. Columns 6 to 9 (indicated by red color) indicate the suppression activity of the wild-type BHLHE41 on the transactivation of Clock/Bmal1 with increasing amounts of plasmid containing BHLHE41 complementary DNA 5 ng, 10 ng, 20 ng, and 40 ng. Columns 10 to 13 (indicated by purple color) indicate the suppression activity of the BHLHE41-c.1151C > A (p.Pro384Arg), on the transactivation of Clock/Bmal1 with the same increasing amounts of BHLHE41 cDNA. Columns 14 to 17 (indicated by yellow color) indicate the suppression activity of the BHLHE41-c.1086C > T (p.Tyr362His) on the transactivation of CLOCK/BMAL1 with the same increasing amounts of BHLHE41 cDNA. Columns 18 to 21 (indicated by green color) indicate the suppression activity of the BHLHE41-c.1151C > A (p.Pro384Gln) on the transactivation of Clock/Bmal1, with the same increasing amounts of BHLHE41 cDNA5. Statistical analysis by *t*-test; \* P < 0.05.



**Figure S3**—The effect of the variants on the Gal 4 UAS promoter system. **(A)** HEK 293T and Neuro 2a cells were transfected with vectors expressing Gal4 DNA binding domain (BD) fused to wild-type and variant BHLHE41 together with VP16 and the reporter plasmid shown in the figure to observe their suppressor activity in the Upstream Activation Sequence (UAS) promoter. Values are the averages of three independent transfections, normalized to cotransfected CMV-Renilla, and expressed as a percentage of the values obtained with Gal4 alone for each cell line. The first column indicates expression of the reporter plasmid (pGL5) itself in both cell lines expressed as 100% activity. Columns 2, 3, and 4 indicate the suppressor activity of the wild-type BHLHE41 in cell lines with amount of 50 ng, 25 ng, and 12.5 ng of plasmid DNA on UAS promoter, respectively. The effect of the BHLHE41-c.1151C > A (p.Pro384Arg) variant (columns 5 through 7), BHLHE41-c.1086C > T (p.Tyr362His) variant (columns 8 through 10), and BHLHE41-c.1151C > A (p.Pro384Gln) variant (columns 11 through 13) were also assessed with various amount of the plasmid DNA on the UAS promoter. Statistical analysis revealed that there are no significant suppressor activities of the BHLHE41 variants compared with wild-type BHLHE41 in HEK293T and Neuro2a cells though UAS. **(B)** Western Blot (WB) analysis of wild-type and variants of mBHLHE41 in both HEK293T and Neuro2a. WB analysis indicated that the expression level of the variants and wild-type BHLHE41 in HEK293T and Neuro2a cell lines are comparable. WB carried out using antibody on 30 µg of total protein. Enhanced chemiluminescence (ECL) method was used to detect the presence of the proteins. Top panel: lanes 1, 2, 3, 4, and 5 contain cell-free extract protein samples obtained from Neuro2a cell lines expressing BHLHE41-c.1151C > A (p.Pro384Gln), BHLHE41-c.1086C > T (p.Tyr362His), BHLHE41-c.1151C > A (p.Pro384Arg), BHLHE41WT, and mock (untransfected cell-free extract) respectively. Bottom panel: lanes 6, 7, 8, and 10 contain cell free extract protein samples obtained from HEK 293T cell lines expressing BHLHE41-c.1151C > A (p.Pro384Gln), BHLHE41-c.1086C > T (p.Tyr362His), BHLHE41-c.1151C > A (p.Pro384Arg), BHLHE41WT, and mock (untransfected cell-free extract) respectively. **(C)** Quantification of the Western blot results was performed using the ImageJ software.