

Long-Term Effects of the Targeting the Ultra Poor Program[†]

By ABHIJIT BANERJEE, ESTHER DUFLO, AND GARIMA SHARMA*

This paper studies the long-run effects of a “big-push” program providing a large asset transfer to the poorest Indian households. In a randomized controlled trial that follows these households over ten years, we find positive effects on consumption (0.6 SD), food security (0.1 SD), income (0.3 SD), and health (0.2 SD). These effects grow for the first seven years following the transfer and persist until year ten. One main channel for persistence is that treated households take better advantage of opportunities to diversify into more lucrative wage employment, especially through migration. (JEL I32, I38, J22, J31, O12, O18)

Development economics has long posited that the poor may be poor for no good reason other than the fact that they started poor (for some early work see Leibenstein 1958, Dasgupta and Ray 1986, Banerjee and Newman 1993, and Galor and Zeira 1993). This is the idea of a poverty trap, which has the implication that a one-time capital grant that makes very poor households significantly less poor (“big push”) might set off a virtuous cycle that takes them out of poverty. Forty-three countries now embrace some version of this idea and make large transfers to over 3.1 million of their poorest households.¹ In particular, the “Targeting the Ultra Poor” (TUP) intervention, pioneered by BRAC in Bangladesh, employs a multifaceted approach, offering poor households an asset transfer, consumption support, savings, and training in the hopes of unlocking a poverty trap.

Short- and medium-run evaluations across a number of contexts find large and positive treatment effects of the TUP program on poor households’ economic well-being, including on measures of net worth, income, consumption, and health (Banerjee et al. 2015, Bandiera et al. 2017, Bedoya et al. 2019). The policy push for these programs was in large part based on these evaluations, which showed that if

* Banerjee: Massachusetts Institute of Technology, JPAL, and NBER (email: banerjee@mit.edu); Duflo: Massachusetts Institute of Technology, JPAL, and NBER (email: eduflo@mit.edu); Sharma: Massachusetts Institute of Technology (email: gsharma@mit.edu). Pinelopi Koujianou Goldberg was coeditor for this article. The authors thank Bandhan, in particular Mr. Chandrashekhar Ghosh and Ramaprasad Mohanto, for their tireless support and collaboration; CGAP and the Ford Foundation for funding; Biotech International for donating bednets; and, especially, Annie Duflo, Lakshmi Krishnan, Justin Oliver, and the Center for Microfinance for their outstanding support of this project. Abhay Agarwal, Arkadeep Bandopadhyay, Prasad Chakraborty, Gabriella Fleischman, Clemence Idoux, Sudha Kant, and Jyoti Prasad Mukhopadhyay provided valuable research assistance. Field work approved by MIT Institutional Review Board under protocol #701002099 and #1408006525. The analysis was pre-registered in the AEA RCT Registry, with unique identification number AEARCTR-0000382.

[†] Go to <https://doi.org/10.1257/aeri.20200667> to visit the article page for additional materials and author disclosure statement(s).

¹ Partnership for Economic Inclusion *State of the Sector* report, 2018.

the results were persistent over time, in the long run, the program benefits would be larger than the (considerable) initial costs. Balboni et al. (2020) provide evidence that the pattern of short- and medium-run impacts in Bangladesh is indeed consistent with the presence of a poverty trap: if the program pushes household wealth above some threshold, households escape poverty, but if they were too poor to start with, they slide back into poverty.

However, evidence of long-term impacts of such programs remains scarce. This paper fills this gap by tracking the four-, seven-, and ten-year impacts of a TUP program in West Bengal, India. Observing both treatment and control households over time is key to establishing the existence (or the lack thereof) of a poverty *trap* because it tells us whether households would have escaped poverty on their own over many years absent any intervention through their own efforts, potentially aided by larger, macroeconomic, tides that “raise all boats.”

The results show large improvements in household well-being even for those who were not assigned to the program. Average household per capita consumption was \$1.35 (2018 PPP) at baseline in the control group and \$2.90 by year ten. Nevertheless, measures of economic well-being (consumption, wealth, health, income) improve significantly and substantially faster among treated households until year seven from the asset transfer, and the resulting treatment control gap persists between years seven and ten. Their per capita consumption is \$0.60 per day (0.6 standard deviations) higher than the control group at both years seven and ten, and income is 0.3 standard deviations higher. This temporal pattern of growing effects followed by persistence is consistent with the alleviation of a poverty trap, what BRAC describes as the graduation of treated households. However, it is also consistent with there being persistent effects without actually getting out of a trap: the control households do become less poor over time, and the treatment households are still not very rich by the time the treatment effect stabilizes (although their average consumption is above the World Bank threshold for “moderate poverty”). It would take an even longer follow-up to conclude that the treatment households have reached a permanently higher steady state.

What are the actual channels through which the effect of a one-time shock persists? This is the subject of much theoretical work (see, for example, Dasgupta and Ray 1986, Banerjee and Newman 1993, Galor and Zeira 1993, and Banerjee 2000, among others). These papers emphasize the idea that poor households are unable to reach the threshold level of investment at which productivity rises steeply, either because they cannot raise or save enough capital or because they are unwilling to absorb the accompanying increase in risk. The capital grant pushes them over that threshold, and as a result their income goes up sharply, allowing them to sustain the new higher level of investment. A more recent literature emphasizes psychological factors: becoming wealthier makes households more optimistic about the future and therefore more willing to save and/or put in effort (Banerjee and Mullainathan 2010, Genicot and Ray 2017) or more able to focus and make good decisions (Mullainathan and Shafir 2013).

These models conceptualize the effect of the big push as a one-time shift to a different mode of production. Our data, on the other hand, suggest a more complex dynamic response: initially (that is, at 18 months) these TUP beneficiaries are mainly richer because they have the asset that was transferred (mainly livestock). At

three years they have diversified into new businesses in addition to the livestock and have significantly more earnings from nonfarm microenterprises than the control group. This divergence gets even more amplified by year seven, when the nonfarm microenterprise earnings in treatment are nearly twice that in control. However, we also see the emergence of a third major source of divergence: wage income. There is no treatment effect on wage earnings at 18 months or three years, but by year seven, the gap between treatment and control is the same order of magnitude as the effect on nonfarm microenterprises and twice the impact on livestock earnings. This seems to be almost entirely driven by a difference in the earnings of migrants from the family between treatment and control households.

By year ten, we see another shift. The treatment effect on nonfarm microenterprises attenuates relative to year seven (though it is still higher than in year three), but the effect on remittances more than doubles. In other words, the household is increasingly specialized in labor earnings, coming mainly from migrants.

These multiple shifts are not per se inconsistent with the theory since the idea of the production technology in these models is sufficiently abstract to accommodate doing different things at different points of time. However, it does provide a quite different perspective on what is going on. The first transition, from livestock to nonfarm microenterprises, may not be particularly surprising since the households were not given much choice on what assets they can get from the program and they can use the earnings from the livestock to fund a move toward what they see as a better opportunity. The shift toward more labor earnings demands more of an explanation since in many models (for example, Banerjee and Newman 1993) the labor market is seen as the alternative that can be accessed even by those who have no capital. However, migration often requires an upfront investment (Bryan, Chowdhury, and Mobarak 2014), and it is possible that treated households are better placed to pay for that.

This last observation has another important implication: while it is of course true that a macro shock that creates new opportunities for everyone can eliminate a poverty trap and therefore make a TUP-like intervention unnecessary, it is also possible that the intervention made it easier to take advantage of new opportunities. This kind of macro shift seems to have transpired in our setting: in the control group wage earnings go up by a factor of three between the first endline (at 18 months) and the last (at ten years), probably because of a combination of growth in India and a demographic shift, coming from the fact that the children of the women who were selected for the study are now old enough to enter the labor market. However, the treatment group is better able to take advantage of these new opportunities—for one, compared to the control group, members of treated families are less likely to migrate to the nearest big city, Kolkata, as compared to urban centers farther away,² and they migrate for longer. By year seven, wage earnings are almost 30 percent larger in the treatment group.

This could be because they have more access to capital, and migrating (especially migrating far) is expensive. Or it could be that they are better informed or more confident as a result of the head start they receive (Banerjee et al. 2018 make the case

²Delhi is the most common urban destination for out-of-state migrants from Bengal (2018).

that the TUP intervention in Ghana raises labor supply through such psychological mechanisms). Whatever the explanation, the important insight is that an intervention like TUP might empower beneficiaries to take better advantage of whatever new opportunities arise over time, and for that reason, positive macroeconomic shifts may be complementary to a big-push intervention rather than a substitute.

This paper is most closely related to a small number of recent papers studying whether a one-time positive shock has a long-term impact on the lives of the poor. The closest two are perhaps Blattman, Fiala, and Martinez (2020), who find that a big-push intervention in Uganda has a large impact four years after the intervention that disappears by year nine as the control group catches up with the treated group due to opportunities for wage employment, and Bandiera et al. (2017), who study TUP in Bangladesh and find a positive impact seven years after the intervention, using a combination of experimental and nonexperimental methods to deal with the fact that the control group was treated in year four.

I. Experimental Design and Data

The nongovernmental organization Bandhan ran the TUP program in West Bengal starting in 2007. The poorest households were identified in two steps. First, residents across 120 village hamlets ranked households into five wealth quintiles. Among households ranked in the bottom quintile, Bandhan then verified eligibility per seven criteria: (i) presence of an able-bodied female member (to manage the asset), (ii) no credit access, (iii) landholding below 0.2 acres, (iv) no ownership of productive assets, (v) no able-bodied male member, (vi) presence of school-aged children who were working instead of attending school, and (vii) primary source of income being informal labor or begging. Households had to meet the first two criteria and at least three of the remaining five in order to be eligible for the TUP intervention. In total, 978 households were deemed eligible. Roughly half of these (514) were randomly assigned to receive the intervention, with stratification at the hamlet level. Of these, only 266 accepted treatment. All reported estimates are intent-to-treat estimates.

Households in the treatment group who chose to participate chose a productive asset from a menu of options (two cows, four goats, one cow and two goats, non-farm microenterprise inventory, etc). About 82 percent chose livestock. In addition to the asset, they received weekly consumption support for 30–40 weeks,³ access to savings, and weekly visits from Bandhan staff over a span of 18 months. These visits were designed to deliver training on generating income from the chosen asset, life-skills coaching, and health information. Bandhan had no contact with beneficiary households starting 18 months after the asset transfer.⁴

To collect information on baseline household characteristics, the research team administered a survey prior to the distribution of assets in 2007–2008, recording household demographics, consumption, food security, asset ownership, income, income sources, financial inclusion, adult time use, and physical and mental well-being. Online Appendix Table A2 confirms balance between treated and control households

³The exact duration was 30 weeks for households receiving goats and 40 weeks for households receiving cows. The allowance of 90 rupees/week (\$7.60 in 2007 US dollar PPP) was meant to aid subsistence.

⁴Unless they became microfinance clients, which was rare.

on baseline characteristics. Treated households had on average 3.9 members, including 1.6 children under 14 years old. They had monthly per capita consumption of \$40 (2018 US dollar purchasing power parity, or PPP) and owned less than 0.1 acres of land. The median TUP recipient was a female aged 44 years old in 2007.

We track economic and health outcomes for treated and control households through four subsequent survey waves administered at 18 months, 3 years, 7 years, and 10 years following the transfer of productive assets. These surveys capture the same information as described previously. Importantly, to study if constraints are alleviated intergenerationally, we track economic outcomes (income sources, migration, remittances) for all household members and not just the TUP recipient. All program activities had ceased by the first endline survey. Online Appendix Table A1 details the timeline of program and survey activities.

Of 978 original households, 71 percent are tracked across all 4 survey waves (83 percent in endline 1, 89 percent in endline 2, 88 percent in endline 3, 90 percent in endline 4). Online Appendix Table A3 shows that attrition is not systematically different between treated and control households, and Table A7 shows that results are unchanged when restricting to households tracked across all four waves.

II. Results

A. Long-Term Effects of the TUP Program

Empirical Strategy.—First, we consider how the TUP intervention affects households' economic well-being over time. Our results estimate TUP's causal effects on five economic indices capturing household wealth, per capita consumption, food security, financial inclusion, and income and revenues at the time of each of the four survey waves. These indices are constructed using the same methodology as in Banerjee et al. (2015), which studied the TUP's impact three years after the delivery of assets.

All indices are created by first constructing z -scores (that is, subtracting the baseline mean and dividing by the baseline standard deviation) for each variable, averaging over all variables that comprise the index, and standardizing to the baseline value of the index. Results are reported in units of baseline standard deviations of the index. One exception is the income and revenue index, for which we do not have baseline information about some subcomponents; it is therefore standardized to the control mean, and results are reported in units of control group standard deviation. The variables used in the construction of each index are described in detail in the following section.

Since the program was randomly assigned, the following regression specification estimates causal average treatment effects at each survey wave t :

$$(1) \quad Y_{iht} = \alpha_{1t} + \beta_{1t} \text{Treat}_i + \kappa_{1t} Y_{ih\text{baseline}} + \gamma_{1ht} + \epsilon_{iht}$$

where Y_{iht} is the outcome of interest for household i residing in hamlet h during survey wave t . The coefficient β_{1t} on an indicator for treatment Treat_i at time t provides the average treatment effect of the program on studied outcomes at that wave. Since treatment was stratified by hamlet, all specifications include hamlet fixed effects (γ_{1h}). The specification controls for the baseline value of the outcome ($Y_{ih\text{baseline}}$).

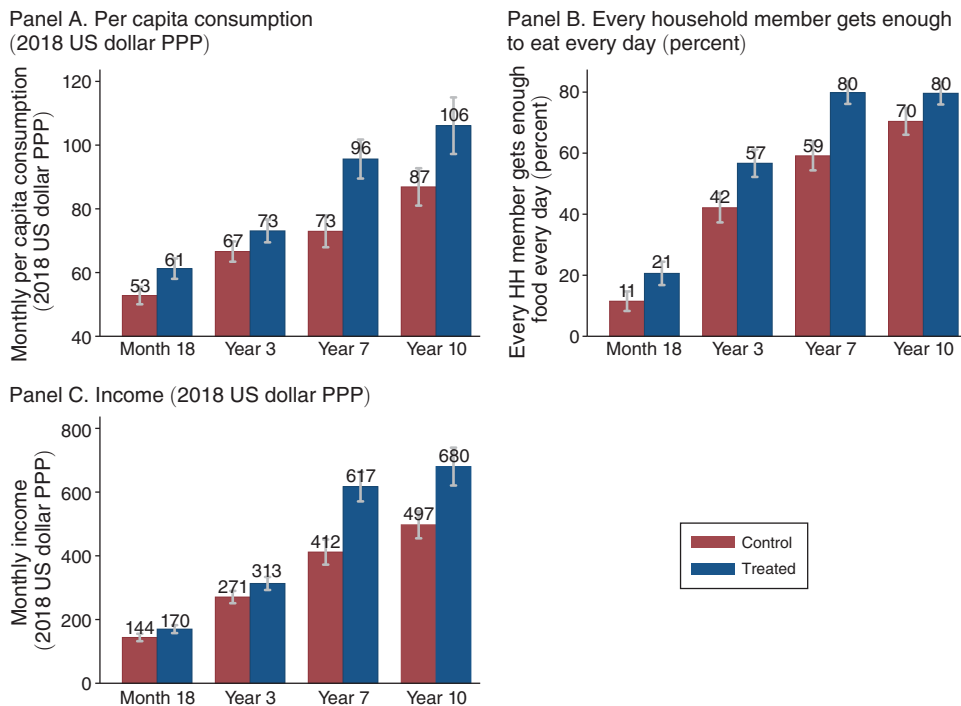


FIGURE 1. CONSUMPTION AND INCOME OVER TIME

Notes: Monthly per capita consumption and monthly household income are reported in 2018 US dollars corrected for PPP. Food security is reported in terms of the share of households reporting that every household member gets enough food every day. Per capita consumption is constructed using a detailed consumption module asking about households' food, nonfood, and durable purchases. Income sums over income earned by each individual member from various activities in a typical month, as reported in the household roster, and remittances received by the household. Ninety-five percent confidence intervals are reported.

and reports heteroskedasticity-robust standard errors. Similar regressions are estimated with individual-level outcomes (index of physical health, mental health, productive time use, and political involvement of adult members) with standard errors clustered by household.

Both household and adult outcomes (variables in Table 1) are the same as in Banerjee et al. (2015), with the time frame extended to ten years post asset transfer.⁵ The effect on political involvement is reported in online Appendix Table A4 because of column restrictions.

Results: Growing Positive Effects until Year Seven, Persistence between Years Seven and Ten.—

Consumption and Income over Time: Graphical Evidence: Figure 1 shows per capita consumption, food security, and household income in treatment and control households. Values are in 2018 US dollars, corrected for PPP. The control

⁵ Women's empowerment was also included in Banerjee et al. (2015) but is not included here because it was not measured after the first endline.

group consumes \$1.35 at baseline,⁶ \$1.80/day by 18 months, \$2.20/day by year three, \$2.40/day by year seven, and \$2.90/day by year ten. Per the World Bank's official definition of poverty, they move on average from a state of extreme poverty (under \$2.10/day) to a moderate one (under \$3.50/day).⁷ The treated group consumes the same as control at baseline but consistently more across all four endline surveys: \$2/day by 18 months, \$2.50/day by year three, \$3.10/day by year seven, and \$3.53/day by year ten. Thus, by year ten, the treatment group's average reaches just beyond moderate poverty.

Panel B plots another marker of extreme poverty: the share of households reporting that all household members had enough to eat for all days. In the control group, this variable increases from 10 percent to 70 percent between baseline and year 10, a considerable improvement. The treatment group does better every year, with treatment effects that are increasing until year seven and stabilizing between years seven and ten.

Panel C tracks income: control households earn \$144 per month by 18 months, \$271 by year three, \$412 by year seven, and \$497 by year ten. Treated households earn more per month on average than the control group at each of the four endlines: \$170 by 18 months, \$313 by year three, \$617 by year seven, and \$680 by year ten.

Household Outcomes: Table 1 (columns 1–5) reports the TUP program's effects on households' economic well-being. The program had large, positive, and growing effects on wealth, income, consumption, and food security over the first seven years following the asset transfer. The effects on consumption, income, and food security persist even ten years later.

The asset index in column 1 is constructed using principal component analysis aggregating ownership of livestock, other productive assets (for example, a bicycle or sewing machine), and durable household items (for example, a television or refrigerator). Treated households have 0.2 SD higher asset ownership than the control group at 18 months ($p < 0.05$) and 0.4 SD higher asset ownership at three years ($p < 0.01$). This effect grows to 0.8 SD by seven years ($p < 0.01$).

Treatment effects on assets at year ten continue to be positive (0.35 SD) but smaller than in year seven. This is largely attributable to treated households diversifying out of livestock and nonfarm microenterprises and into labor income. We document the magnitude and importance of these changes in the following section.

Per capita consumption in column 2 is constructed using a detailed consumption module asking about households' food, nonfood, and durable purchases. It rises among treated households for the first seven years following asset transfer, being 0.3 SD higher than the control group at 18 months and three years ($p < 0.01$) and growing to 0.7 SD higher at seven years. It remains persistently higher by 0.6 SD at ten years ($p < 0.01$).

The food security index in column 3 aggregates whether everyone in the household gets enough food every day, whether it is not the case that any adult skipped a meal in the last year, that no household member went without food for a day, no

⁶Table A1 in online Appendix.

⁷The World Bank defined extreme poverty as living on less than \$1.90/day and moderate poverty as living on less than \$3.10/day in 2011. We update these to 2018 US dollars corrected for PPP.

TABLE 1—EFFECT ON HOUSEHOLD AND ADULT OUTCOMES

	Asset index (1)	Per capita consumption (2)	Food security index (3)	Income and revenues (4)	Financial inclusion index (5)	Physical health index (6)	Mental health index (7)	Productive time use (8)
<i>Panel A. Endline 1 (18 months)</i>								
Treatment	0.217 (0.111)	0.311 (0.076)	0.184 (0.048)	0.145 (0.075)	-0.004 (0.042)	0.061 (0.028)	0.115 (0.029)	0.285 (0.049)
<i>q</i> -value	0.041	0.001	0.001	0.041	0.262	0.028	0.001	0.001
Control mean	-0.20	0.35	0.35	0.00	0.14	0.12	0.32	0.23
Baseline mean	-0.00	-0.00	-0.00	-0.00	-0.00	-0.00	-0.00	-0.00
Observations	679	813	812	814	812	1,504	1,502	1,504
<i>Panel B. Endline 2 (three years)</i>								
Treatment	0.389 (0.103)	0.292 (0.079)	0.251 (0.059)	0.172 (0.071)	0.192 (0.062)	0.027 (0.027)	0.012 (0.037)	0.102 (0.044)
<i>q</i> -value	0.001	0.001	0.001	0.015	0.003	0.160	0.334	0.018
Control mean	-0.25	0.85	0.94	-0.00	0.30	0.21	0.75	0.28
Baseline mean	-0.00	-0.00	-0.00	-0.00	-0.00	-0.00	-0.00	-0.00
Observations	875	875	875	875	875	1,757	1,757	1,756
<i>Panel C. Endline 3 (seven years)</i>								
Treatment	0.814 (0.132)	0.717 (0.125)	0.431 (0.062)	0.334 (0.070)	0.181 (0.135)	0.130 (0.031)	0.249 (0.042)	0.165 (0.044)
<i>q</i> -value	0.001	0.001	0.001	0.001	0.047	0.001	0.001	0.001
Control mean	-0.46	1.09	1.09	0.00	0.67	0.57	1.09	-0.04
Baseline mean	-0.00	-0.00	-0.00	-0.00	-0.00	-0.00	-0.00	-0.00
Observations	807	867	867	869	867	1,906	1,900	1,915
<i>Panel D. Endline 4 (ten years)</i>								
Treatment	0.346 (0.121)	0.579 (0.175)	0.127 (0.063)	0.264 (0.080)	0.121 (0.152)	0.187 (0.040)	0.203 (0.044)	0.148 (0.052)
<i>q</i> -value	0.005	0.002	0.020	0.002	0.105	0.001	0.001	0.005
Control mean	-0.26	1.61	1.21	0.00	1.08	0.12	0.76	-0.02
Baseline mean	-0.00	-0.00	-0.00	-0.00	-0.00	-0.00	-0.00	-0.00
Observations	885	880	885	885	885	1,229	1,229	1,229

Notes: Robust standard errors are shown in parentheses. They are clustered by household for adult outcomes. The components of indices are described in detail in Section IIIA. Columns 1–5 refer to household-level outcomes and 6–8 refer to adult-level outcomes. The asset index is constructed by first performing principal component analysis on the constituent components, and then creating a *z*-score with respect to the baseline value of the index (that is, subtracting the baseline mean of the index and dividing by its baseline standard deviation). The per capita consumption, food security, financial inclusion, physical health, mental health, productive time, and political involvement indices are constructed by first constructing component-wise *z*-scores (that is, subtracting the baseline mean and dividing by the baseline standard deviation), averaging the *z*-scores, and then standardizing by the baseline value of the index (that is, subtracting the baseline mean of the index and dividing by its baseline standard deviation). Thus, all coefficients are reported in units of baseline standard deviation of the index. The income and revenues index does the analog by standardizing to the control group, that is, coefficients are reported in units of endline standard deviations of the control group (since not all components were measured at baseline). Time use is reported in minutes. To correct for multiple hypothesis testing, we calculate *q*-values per the Benjamini-Hochberg step-up method; reported *q*-values indicate the smallest false discovery rate at which the null hypothesis of zero effect is rejected. The political involvement index is not reported here due to space restrictions but is included in the online Appendix. It is included for calculating adjusted *q*-values. All specifications include baseline controls and hamlet-level fixed effects.

children skipped meals, and everyone in the household regularly ate two meals a day. Treated households are 0.2 SD more food secure than the control group by 18 months and 0.25 SD by year three ($p < 0.01$). This effect grows to 0.4 SD by year seven and remains at 0.13 SD by year ten ($p < 0.05$). Table 2 disaggregates treatment effects on consumption and food security into individual components,

TABLE 2—MONTHLY CONSUMPTION AND FOOD SECURITY

	Per capita consumption, excl. migrant (1)	Per capita consumption, HH avg. c for migrant (2)	Per capita food consumption (3)	Per capita nonfood consumption (4)	Per capita durable goods consumption (5)	Everyone in HH gets enough food every day (6)	No one in the HH went a whole day without food (7)	No children skipped meals (8)
<i>Panel A. Endline 1 (18 months)</i>								
Treatment	7.554 (1.837)	8.196 (2.255)	5.362 (1.195)	2.133 (1.082)	-0.356 (0.374)	0.074 (0.025)	0.128 (0.030)	0.032 (0.034)
Control mean	49.25	52.77	33.28	15.97	2.28	0.11	0.68	0.75
Baseline mean	40.74		26.76	14.00	0.97	0.11	0.28	0.51
Observations	813	813	813	813	813	812	811	613
<i>Panel B. Endline 2 (three years)</i>								
Treatment	7.080 (1.913)	7.429 (2.441)	3.021 (1.151)	4.010 (1.139)	0.881 (0.385)	0.141 (0.034)	0.038 (0.023)	0.085 (0.025)
Control mean	61.37	66.59	37.54	23.83	1.93	0.42	0.85	0.86
Baseline mean	40.74		26.76	14.00	0.97	0.11	0.28	0.51
Observations	875	875	875	875	875	875	875	636
<i>Panel C. Endline 3 (seven years)</i>								
Treatment	17.385 (3.030)	21.252 (3.916)	9.778 (1.731)	7.542 (1.681)	2.471 (0.507)	0.205 (0.032)	0.095 (0.022)	0.045 (0.026)
Control mean	67.15	72.95	37.76	29.40	2.27	0.59	0.83	0.87
Baseline mean	40.74		26.76	14.00	0.97	0.11	0.28	0.51
Observations	867	867	867	867	867	867	867	546
<i>Panel D. Endline 4 (ten years)</i>								
Treatment	14.037 (4.242)	18.454 (5.390)	7.354 (1.595)	6.700 (3.438)	4.204 (1.845)	0.075 (0.029)	0.029 (0.026)	-0.031 (0.036)
Control mean	79.88	86.88	39.09	40.85	5.75	0.70	0.78	0.84
Baseline mean	40.74		26.76	14.00	0.97	0.11	0.28	0.51
Observations	880	880	880	880	880	885	884	451

Notes: Robust standard errors are shown in parentheses. Columns 1–5 report monthly consumption. Column 1 does not include migrant workers in the calculation. Column 2 assumes migrant workers consume the household average. Columns 3–5 do not include migrant workers. All values are in 2018 US dollars adjusted for PPP. All specifications include baseline controls and hamlet-level fixed effects.

finding similar patterns of growth and persistence by years seven and ten, respectively, for consumption and declining impact on food security, probably coming from an improvement in the situation in the control group, as shown in Figure 1.

The index in column 4 aggregates measures of income from livestock ownership, microenterprise, and other self- and wage-employment activities of household members (including remittances) as reported in the household roster. Treated households earn 0.14 SD more than the control group by 18 months and 0.17 SD by year three ($p < 0.05$). This effect grows to 0.3 SD by year seven and persists at this level until year ten ($p < 0.01$).

Finally, we explore the program's effect on an index of financial inclusion by aggregating monthly loans and savings in column 5. While the point estimates are positive and economically meaningful in size (0.12 SD at year ten), they are statistically indistinguishable from zero.

Individual Outcomes: We next turn to the TUP program's effects on adult household members' physical health, mental health, productive work, and political involvement. We find a pattern of growing effects until year seven followed by

persistence until year ten, similar to household-level outcomes. Table 1, columns 6–8, and online Appendix Table A4 report results.

The physical health index in column 6 combines measures of individuals' perceived health, whether the individual missed a day of work in the past month due to poor health, and an activities-of-daily-living score. Physical health of treated household members is 0.06 SD higher by 18 months ($p < 0.05$); this grows to 0.13 SD by year seven and 0.19 SD by year ten ($p < 0.01$).

The mental health index in column 7 aggregates measures of life satisfaction, feelings of sadness, and periods of worry. It improves by 0.1 SD for treated households by 18 months, growing to 0.25 SD by year seven and remaining at this level until year ten ($p < 0.01$).

Adults in treated households also spend more time on productive activities (column 8): on average 0.285 SD (60 more minutes) by 18 months, 0.1 SD (21 more minutes) by year three, and 0.15 SD (30 more minutes) by year seven and year ten ($p < 0.01$).

We find no effect on political involvement, which aggregates whether they voted in the last election and ever approached a *gram pradhan* (village head) or booth member about village needs.

Correction for Multiple Hypothesis Testing: As in Banerjee et al. (2015), this paper takes two steps to account for the fact that some outcomes might show statistically significant results by chance. First, we aggregate a number of outcome measures into the nine indices. Second, we consider these nine as constituting a family of outcomes and control for the false discovery rate, or the expected proportion of rejections of the null that are type I errors. Following the Benjamini-Hochberg step-up method outlined in Anderson (2008), we calculate q -values for each outcome, or the minimum false discovery rate at which the null hypothesis of zero effect on that outcome would be rejected. These are to be interpreted as adjusted p -values and are reported in Table 1. All results are robust to correcting for multiple hypothesis testing.

B. Cost-Benefit Analysis

The intervention cost the equivalent of \$2,163 when corrected for PPP in 2018, of which 56 percent constituted a direct transfer to treatment households. Online Appendix Table A8 and the accompanying text provide details of the cost-benefit analysis, which is analogous to Banerjee et al. (2015). The program breaks even by year four. Its benefit-cost ratio is 379 percent by year 10 and would be 1,110 percent if year 10 gains are sustained in perpetuity. These estimates are larger than in Banerjee et al. (2015), which extrapolated year three gains over time, because treatment effects rise between years three and ten.

Regardless of whether it permanently unlocked a poverty trap, the program in India is thus highly cost effective and pays for itself 2.8 times over within the first ten years. Of all the programs studied in Banerjee et al. (2015), however, India has the most favorable cost-benefit ratio, with low costs and high benefits in the short run. We extend the cost-benefit analysis to four other countries in online Appendix Table A9. In Ethiopia and Pakistan, the program would break even after ten years if

the path of gains over time resembled that in India (that is, if they increased in the same proportion between years three and seven and years seven and ten). In Ghana, the program would almost break even (95 percent), and in Peru it would not. Of course, it remains to be seen whether such persistent benefits also occur in these different settings. As mentioned, Blattman, Fiala, and Martinez (2020) study a cash transfer program in Uganda, where there is a large impact at year four that vanishes by year nine.

C. Channels of Persistence

Diversification in Household Activities.—To explore the forces underlying the treatment effects at various points in time, we document changes in the composition of households' economic activities and income.

Table 3 decomposes treatment effects on household income into those attributable to revenue from livestock, microenterprise and self-employment, and wages.⁸ Income is reported in 2018 US dollars corrected for PPP. Three clear and distinct patterns emerge regarding the relative importance of each source over time.

First, TUP households are initially able to leverage transferred livestock to earn higher income than the control group. Monthly livestock revenue among the treated is \$10 and \$8 higher than control at 18 months and three years following the transfer (column 1). This pattern continues through to year seven, when they earn \$27 more livestock revenue than control ($p < 0.01$). The finding of higher livestock income even seven years following the asset transfer is consistent with Bandiera et al. (2017), who find something similar in Bangladesh. However, the difference in livestock earnings between treated and control groups falls to \$17 by year ten, and the main source of earnings gains shifts away from livestock.

Second, treatment households relative to control households show increased diversification into nonfarm microenterprises. Net earnings from these enterprises are constructed from reports of household members' microbusiness earnings in the household roster. Column 2 shows that by year three, treated households earn \$25 more from nonfarm microenterprises than their counterparts in control ($p < 0.01$). This effect is amplified by year seven, with treated households having \$68 greater business earnings than the control group ($p < 0.01$). Treated households' businesses earnings are 70 percent higher than the control group at this time, and the treatment effect size is over twice that on livestock revenue, highlighting the importance of diversification in sustaining greater earnings for TUP households over time. However, this effect declines by year ten, paving way for a new occupational shift into wage income.

Column 3 reports the total of individual members' earnings from various economic activities reported in the household roster (other than livestock and business, these include, among others, fishery and horticulture). Observed patterns are broadly consistent with the previously described trend, that is, that the impact on self-employment earnings is initially low (at 18 months), grows to \$108 (including livestock, business) by year seven ($p < 0.01$), and then falls marginally between years seven and ten.

⁸Wages covers income from casual and agricultural labor as well as income from salaried employment, but casual employment represents by far the major part of wage income.

TABLE 3—MONTHLY INCOME AND REVENUE

	Live-stock revenue (1)	Nonfarm micro-enterprise income (2)	Self-employment (typ. month) (3)	Productive asset index (4)	Wages: migrants remit 100% of wage (5)	Wages: impute typical migrant earnings (6)	Remittances (7)	Self-reported economic status (1–10) (8)
<i>Panel A. Endline 1 (18 months)</i>								
Treatment	10.258 (2.342)	7.927 (4.538)	18.665 (5.796)	0.444 (0.086)	3.902 (6.685)	5.083 (8.485)	0.000 (.)	0.204 (0.071)
Control mean	3.33	36.24	46.09	−0.23	96.06	106.45	0.00	2.77
Baseline mean	0.00	13.24	16.30	−0.00			.	1.97
Observations	814	814	814	681	814	814	814	811
<i>Panel B. Endline 2 (three years)</i>								
Treatment	7.683 (2.652)	25.116 (6.257)	31.057 (6.897)	0.571 (0.072)	6.112 (11.663)	4.628 (13.674)	3.696 (2.369)	0.297 (0.080)
Control mean	7.99	49.47	60.50	−0.30	201.07	217.89	12.88	3.36
Baseline mean	0.00	13.24	16.30	−0.00			.	1.97
Observations	875	875	875	875	875	875	875	875
<i>Panel C. Endline 3 (seven years)</i>								
Treatment	27.262 (5.158)	67.592 (14.264)	108.360 (15.149)	0.795 (0.083)	75.675 (22.299)	89.024 (25.730)	8.871 (6.455)	1.575 (0.141)
Control mean	9.70	90.49	103.15	−0.40	279.06	301.31	34.87	4.73
Baseline mean	0.00	13.24	16.30	−0.00			.	1.97
Observations	869	869	869	807	869	869	869	867
<i>Panel D. Endline 4 (ten years)</i>								
Treatment	16.710 (8.756)	36.816 (14.259)	93.872 (20.803)	0.197 (0.105)	38.238 (24.526)	52.291 (30.057)	19.057 (7.440)	0.642 (0.129)
Control mean	17.80	98.49	144.27	−0.10	325.04	354.93	36.81	4.03
Baseline mean	0.00	13.24	16.30	−0.00			.	1.97
Observations	885	885	885	885	885	885	885	885

Notes: Robust standard errors are shown in parentheses. All values are in 2018 US dollar PPP. Column 1 reports revenue from the sale of livestock or livestock products in an average month. Column 2 reports the sum of household members' earnings from microenterprise in a typical month, as reported in the household roster. Column 3 reports self-employment income in a typical month, calculated as the sum of income earned by each individual member from various self-employment activities, as reported in the household roster. Column 4 reports an index of productive assets, constructed by first performing principal component analysis on the constituent components and then creating a z-score with respect to the baseline value of the index (that is, subtracting the baseline mean of the index and dividing by its baseline standard deviation). The components of this index are described in detail in Section IIIA. Columns 5–6 sum over income earned by each individual member from various activities in a typical month, as reported in the household roster. Wages comprise the sum of household members' earnings from agricultural labor, casual labor, and salaried employment. We sum over locally earned wage income as reported in the household roster and x times the remittances sent back as a migrant worker. We vary x to reflect different assumptions about the share of a migrant's earnings that are remitted back to a household: 100 percent remitted (column 5) or earning as much as they would in the village over a typical month (column 6). Column 7 reports the monthly average of remittances sent back by migrant members of a household. We do not collect data on remittances at the 18 month survey. Column 8 reports a measure of economic satisfaction on a scale of 1–10. All specifications include baseline controls and hamlet-level fixed effects.

Third, the other main source of income diversification is wage employment. Column 4 shows that households are diversifying away from activities that require asset ownership. The treatment effect on the productive asset index, constructed using principal component analysis and then standardized to baseline, at first rises until year seven and then falls between years seven and ten.⁹

⁹Productive assets include livestock, bicycle, sewing machines, and such.

Columns 5–6 track treatment effects on wage income over time. Wages comprise the sum of household members' earnings from agricultural labor, casual labor, and salaried employment. They sum over individual members' locally earned monthly wages and x times the remittances they send back as migrant workers. We ask the total annual remittance sent back and divide by 12 to get the monthly value. We report wage earnings assuming migrants remit 100 percent (column 5). As an alternative we assume that they make the average amount they say they make in a typical month (column 6), ignoring the fact that this combines months that they are in the village and months that they are not.

A consistent pattern emerges, robust across assumptions. Monthly wage income of treated households (including remittances) is at first no higher than that of the control group at 18 months or three years. By year seven, however, it grows to \$76–89 ($p < 0.01$), which is the same order of magnitude as nonfarm microenterprise income. The magnitude of these gains also remains high in year ten. Column 7 shows that about a third of the effect over the long run (year ten) is driven by remittances sent back by migrant workers from treated households. The finding of diversifying into higher-paying wage employment is distinct from Bandiera et al. (2017), who find in Bangladesh that the TUP program enables households to transition away from low-wage casual employment in the village to higher-earning livestock activities. Similarly, Crépon et al. (2015) find that microcredit spurs substitution away from casual wage employment and into self-employment. One possible explanation is that in our context, wage employment—especially among migrants—pays more than self-employment, while casual wage employment in Bangladesh or Morocco does not. Indeed, while they still work as casual laborers (we see very few earning money from business or salaried employment), the average migrant has 12 times the earnings of a nonmigrant earning household member typically engaged in self-employment activities. Finally, column 8 confirms that income increases among treated households are reflected in their own assessment of their economic situation: on a scale of 1–10, they rank themselves 1.6 (year seven) and 0.65 (year ten) points higher than the control group on economic satisfaction.

Taken together, earnings patterns reflect a changing composition of economic activities for the treated group. The program at first enables them to increase their incomes through the transferred assets. Over the long run, treated households are able to translate these early gains into greater income from more lucrative opportunities for microbusiness and, especially, wage employment.

Migration.—As we saw, accounting for migration is important for the magnitude of treatment effects; absent this, the program's effect on wage income is underestimated by 30–50 percent (Table 3, columns 5–6). Similarly, not accounting for migration underestimates treatment effects on per capita consumption by 10–30 percent (Table 2, columns 1–2). Column 1 of Table 2 estimates the treatment effect on consumption excluding migrant members, while column 2 assumes migrants consume the household average. The contribution of migrant workers to the treatment effect on consumption is thus likely an underestimate since migrants are traveling away from the village and probably consume more than those left behind.

Given its importance, we explore treatment effects on the nature of migration and migrant characteristics in Table 4. Columns 1 and 2 show that the TUP does

TABLE 4—MIGRATION

	Migration (1)	No. of migrants (2)	Duration (3)	Migrates to Kolkata (4)	Migrates to urban area (5)	Earnings of migrant worker, typical month (6)	Working in business or formal work (7)
<i>Panel A. Endline 1 (18 months)</i>							
Treatment	-0.016 (0.034)	0.000 (0.042)	11.767 (6.798)	-0.004 (0.066)	0.002 (0.055)	26.326 (19.011)	0.042 (0.046)
Control mean	0.35	0.39	37.08	0.36	0.83	139.89	0.10
Observations	812	812	285	285	285	285	285
<i>Panel B. Endline 2 (three years)</i>							
Treatment	0.028 (0.032)	0.031 (0.041)	14.776 (15.332)	-0.095 (0.069)	-0.039 (0.059)	30.574 (29.920)	0.032 (0.042)
Control mean	0.29	0.33	125.09	0.38	0.83	231.18	0.15
Observations	838	838	256	256	256	256	256
<i>Panel C. Endline 3 (seven years)</i>							
Treatment	0.042 (0.034)	0.042 (0.047)	-11.078 (12.466)	0.067 (0.058)	0.012 (0.047)	89.788 (33.619)	0.017 (0.037)
Control mean	0.37	0.46	123.26	0.30	0.78	361.21	0.11
Observations	842	842	332	332	332	332	332
<i>Panel D. Endline 4 (ten years)</i>							
Treatment	0.017 (0.032)	0.024 (0.046)	25.167 (12.753)	-0.138 (0.059)	0.033 (0.053)	51.238 (31.240)	-0.029 (0.042)
Control mean	0.34	0.44	124.24	0.35	0.80	362.12	0.13
Observations	859	859	307	308	308	308	308

Notes: Robust standard errors are shown in parentheses. Columns 3–7 restrict the sample to households with a migrant worker and average outcomes over migrant workers in the household. Column 6 is reported in 2018 US dollar PPP. All specifications include baseline controls and hamlet-level fixed effects.

not have a statistically significant effect on the share of households with migrants and the number of migrant workers. However, those who do migrate from treated households migrate for 25 days longer on average by year ten, which is 20 percent higher than the control group average (column 3). They are also less likely to migrate to Kolkata (14 percent points, column 4) but no less likely to migrate to an urban area (column 5), suggesting they travel farther away. While Kolkata is the largest city in West Bengal, Delhi is the most prominent destination for out-of-state migrants and one of the two biggest economic powerhouses of India (along with Mumbai) (India Ministry of Finance 2017).

Migrating for longer and going to urban centers farther away than Kolkata translates into higher earnings for these migrant workers, as already indicated by higher remittances in Table 3.

Finally, we explore whether these earnings differences might be explained by the productivity of migrant workers or by what they do at their destinations. The evidence suggests that these differences in productivity are not driven by what migrants do as coded in our data: treated household migrants are no more likely to be working in business activities or formal work (column 7). However, even if they do the same thing, they do it in different locations as we saw, and this means that

the average earnings of those who migrate in treatment households are higher than average earnings of those in control households—they earn on average \$89 more in a typical month in year seven and \$51 in year ten (column 6).

Treatment Effects against the Backdrop of Macroeconomic Changes.—The ten years of the study correspond with rapid growth in wages, income, and consumption in this context. This is best seen through the large improvements among control group households over this time period: by year ten, these households consume about twice as much as their baseline selves and have higher food security, with 70 percent reporting having enough food for every household member compared with 10 percent at baseline (Figure 1 and Table 2). They also earn over three times as much at year ten as their historical selves at 18 months following asset transfer (Figure 1 and Table 2). This appears predominantly driven by opportunities for migration and wage employment arising naturally over the course of the study. The former rises from 40 to 120 days on average (Table 4) and the latter by 3.7 times between month 18 and year ten (Table 3, columns 5–6).

Even so, treated households maintain higher income (and, consequently, consumption and health) compared with the control even ten years after the TUP program. Young members of these households appear better able to take advantage of available opportunities. This is in contrast to Blattman, Fiala, and Martinez (2020), who find in the context of a cash transfer program for youth in Uganda that the comparison group is completely able to catch up with the treated group due to earnings opportunities generated outside the intervention. In contrast, our findings suggest that the multifaceted TUP program might be a complement to macroeconomic changes inducing poverty alleviation rather than a substitute.

III. Conclusion

This study finds that the TUP big-push intervention has a positive impact on the well-being of the poorest households over the long run, even ten years after asset transfer. It improves their consumption, income, and health at a growing rate for the first seven years and appears to durably lift them out of extreme poverty. The fact that the treatment effect on consumption and income grows until year seven and then stays high is consistent with the alleviation of a poverty trap: households receiving the asset transfer and accompanying consumption and savings support are able to sustain and improve investments, earnings, consumption, and their health over time. Just as in common models of poverty traps, receiving the program enables households to diversify their sources of income. Initially higher earnings due to the asset enable investing in nonfarm microbusinesses and pursuing opportunities for wage employment, both locally and in cities farther away. TUP households take greater advantage of opportunities for income gains, such as migration, that arise naturally in the course of time, migrating farther away, for longer, and earning more than other households. Of course, despite these gains, by year ten, treatment households have barely escaped poverty (their average daily consumption per capita rose from \$1.35 at baseline to \$3.53 at PPP, just above the World Bank moderate poverty line). Meanwhile, while control members are still poor, this is less true than when the program started. They may eventually catch up. Still, regardless of whether they

have permanently escaped a poverty trap, at least in the Indian context, the TUP, for a one-time intervention, had a remarkably durable impact.

REFERENCES

- Anderson, Michael L.** 2008. "Multiple Inference and Gender Differences in the Effects of Early Intervention: A Reevaluation of the Abecedarian, Perry Preschool, and Early Training Projects." *Journal of the American Statistical Association* 103 (484): 1481–95.
- Balboni, Clare, Oriana Bandiera, Robin Burgess, Maitreesh Ghatak, and Anton Heil.** 2020. "Why Do People Stay Poor?" Unpublished.
- Bandiera, Oriana, Robin Burgess, Narayan Das, Selim Gulesci, Imran Rasul, and Munshi Sulaiman.** 2017. "Labor Markets and Poverty in Village Economies." *Quarterly Journal of Economics* 132 (2): 811–70.
- Banerjee, Abhijit.** 2000. "The Two Poverties." *Nordic Journal of Political Economy* 26: 129–41.
- Banerjee, Abhijit, Emily Breza, Esther Duflo, and Cynthia Kinnan.** 2019. "Can Microfinance Unlock a Poverty Trap for Some Entrepreneurs?" NBER Working Paper 26346.
- Banerjee, Abhijit, Raghendra Chattopadhyay, Esther Duflo, and Jeremy Shapiro.** 2018. "Helping the Ultra-Poor Use Microcredit in Murshidabad, India." AEA RCT Registry. October 24. <https://doi.org/10.1257/rct.382-3.0>.
- Banerjee, Abhijit, Esther Duflo, Nathanael Goldberg, Dean Karlan, Robert Osei, William Parienté, Jeremy Shapiro, Bram Thuysbaert, and Christopher Udry.** 2015. "A Multifaceted Program Causes Lasting Progress for the Very Poor: Evidence from Six Countries." *Science* 348 (6236): 1260799.
- Banerjee, Abhijit, Esther Duflo, and Garima Sharma.** 2021. "Replication Data for: Long-Term Effects of the Targeting the Ultra Poor Program." American Economic Association [publisher], Inter-university Consortium for Political and Social Research [distributor]. <https://doi.org/10.3886/E130362V1>.
- Banerjee, Abhijit, Dean Karlan, Robert Darko Osei, Hannah Trachtman, and Christopher Udry.** 2018. "Unpacking a Multifaceted Program to Build Sustainable Income for the Very Poor." NBER Working Paper 24271.
- Banerjee, Abhijit, and Sendhil Mullainathan.** 2010. "The Shape of Temptation: Implications for the Economic Lives of the Poor." NBER Working Paper 15973.
- Banerjee, Abhijit V., and Andrew F. Newman.** 1993. "Occupational Choice and the Process of Development." *Journal of Political Economy* 101 (2): 274–98.
- Bedoya, Guadalupe, Aidan Coville, Johannes Haushofer, Mohammad Razaq Isaqzadeh, and Jeremy Shapiro.** 2019. "No Household Left Behind: Afghanistan Targeting the Ultra Poor Impact Evaluation." World Bank Policy Research Working Paper 8877.
- Blattman, Christopher, Nathan Fiala, and Sebastian Martinez.** 2020. "The Long-Term Impacts of Grants on Poverty: Nine-Year Evidence from Uganda's Youth Opportunities Program." *American Economic Review: Insights* 2 (3): 287–304.
- Bryan, Gharad, Shyamal Chowdhury, and Ahmed Mushfiq Mobarak.** 2014. "Underinvestment in a Profitable Technology: The Case of Seasonal Migration in Bangladesh." *Econometrica* 82 (5): 1671–1748.
- Crépon, Bruno, Florencia Devoto, Esther Duflo, and William Parienté.** 2015. "Estimating the Impact of Microcredit on Those Who Take It Up: Evidence from a Randomized Experiment in Morocco." *American Economic Journal: Applied Economics* 7 (1): 123–50.
- Dasgupta, Partha, and Debraj Ray.** 1986. "Inequality as a Determinant of Malnutrition and Unemployment: Theory." *Economic Journal* 96 (384): 1011–34.
- Galor, Oded, and Joseph Zeira.** 1993. "Income Distribution and Macroeconomics." *Review of Economic Studies* 60 (1): 35–52.
- Genicot, Garance, and Debraj Ray.** 2017. "Aspirations and Inequality." *Econometrica* 85 (2): 489–519.
- India Ministry of Finance.** 2017. "India on the Move and Churning: New Evidence." In *Economic Survey 2016–2017*. New Delhi: Government of India.
- Leibenstein, Harvey.** 1958. "Underemployment in Backward Economies: Some Additional Notes." *Journal of Political Economy* 66 (3): 256–58.
- Mullainathan, Sendhil, and Eldar Shafir.** 2013. *Scarcity: Why Having Too Little Means So Much*. New York: Times Books.